



# Sneha Charitable Trust

## Annual Report 2014 - 15



## TABLE OF CONTENTS

Introduction	1
Message from the President	3
About Sneha Charitable Trust	4
Health Care Centres of SCT	6
<b>Snehadaan</b>	<b>6</b>
<b>Snehatheeram</b>	<b>10</b>
<b>Snehasadan</b>	<b>14</b>
<b>Snehakiran</b>	<b>17</b>
Orphan and Vulnerable Children Care Program	20
<b>Sneha Care Home</b>	<b>20</b>
<b>Snehagram</b>	<b>28</b>
<b>Snehakids at Snehasadan</b>	<b>33</b>
Innovative initiatives of SCT	38
<b>Camillian Task Force</b>	<b>38</b>
▶ Medical Relief work in Jammu & Kashmir	39
▶ Life Drops	41
▶ Life Beats	41
Balance Sheet Financial	42

### ▶ CONSTITUTIONAL DETAILS

Legal Status: Trust

### REGISTRATION INFORMATION

Registration No.: BNG[U] - JNR 506/2002-03

Registration Date: February 21, 2003

Registration Details along with Circle: Seal of the Photo Registrar Bangalore, Jayanagar, Bangalore



## Introduction

**T**hank you, one and all for another year of successful collaboration in our relentless effort to mitigate the challenges of living with HIV among the most vulnerable and the helpless. We are now approaching 20 years of dedicated service in this area. Our eight centres in South India have become robust service delivery centres for in-house HIV management among adults and children. They also provide psycho-social support and outpatient care to a large number of PLHIV living within the society through our outreach programs.

The 400+ children in our direct care can now aspire and look forward to being independent assets to the society. They have stabilized their HIV, and, with improved well-being, are able to pursue education through Nation Open School Curriculum and vocational skill development. As a testimony to our success in health, nutrition and personality development among these vulnerable children, two of our children participated in the children's Olympics in Netherlands. One of them has shown outstanding capability as a marathoner and has started making waves by finishing multiple marathons at the young age of 17.

A few important initiatives are taking shape and giving direction to our future. The foremost among them is the Camillian Task Force, with its focus on disaster relief services. Last year we were able to mobilize teams to reach disaster impacted areas within and outside the country and provide care as well as pastoral services to the sick, the mourning and the needy. The second major initiative is the broadening of our focus from HIV care to include care for destitute and terminally ill. Although this is in its infancy, key decisions being taken on this matter will impact the services we provide in the next several years. Lastly, for the children who have grown with us, as a planned transition to independence when they approach adulthood, we are working on occupational skill development programs to support their needs. These programs will also serve as transition ground from adults who are returning to good health after prolonged illness.

Even as we continue to expand our horizon on care delivery for the sick, suffering and needy, we remind ourselves of the responsibility of creating a future for the orphans and vulnerable children who depend on us to be their family, protector and role models.

We are grateful to God and to all those who have contributed in different ways in our long and difficult yet fulfilling journey until now.









## Message from President

Dear Friends,

Greetings from Sneha Charitable Trust

This Annual Report contains description of our programs and achievements in the year 2014-2015. SCT has been in existence for more than a decade now. Our vision is to realize the dreams of the poor and the underprivileged. Our focus is on those who are unable to access quality healthcare, education or basic amenities which will give them an improved quality of life. Our programs are driven by our mission – to work/ act as an agent of change to help the poorest of the poor access and actualize their rights as enshrined in the Constitution of India. In the ten years we have enhanced and expanded the range of programs. The time is ripe for us to review and realign our programs to the changed realities. We need to reflect and strengthen our successful programs and rework programs which are not effective or do not add value to the beneficiaries. SCT continues to work with volunteers and social workers driven by our core values such as "Care, Compassion, Commitment and competence". As you will see our programs require empathy and proactive reaching out to the poor and needy. We are fortunate to have donors who have given us their unstinting support. It is a matter of honour for us that most of our funding comes from individual donors. Thank you very much for reposing your trust in us. We will strive to be transparent and accountable.

Thank you very much for engaging with us

Yours sincerely

**Baby Ellickal**  
**President**  
**Sneha Charitable Trust**



## About Sneha Charitable Trust

**S**neha Charitable Trust (SCT) was founded in 2003 with the aim of co-coordinating social and community health care services to the poor, sick and the most neglected section of our society in India. SCT is managed by the Camillians- an International Faith-based Organization which is exclusively involved in the healthcare field for the past 450 years. It is one of the most challenging, creative and demanding initiatives of Camillians. It has a radical and distinctively global healthcare action – care and support to People Living with HIV/AIDS (PLHIV), destitute, mentally and physically challenged children, training in quality healthcare management, vocational rehabilitation, training and job placement. The trust has also been holding hands with the national programmes and international programmes of care implemented through various government and non-governmental agencies.

In the context of stigma and taboo associated with HIV infection and consequent denial of hospital treatment and rejection from the society experienced by those infected, SCT began its first social and community centre in Bengaluru, known as Snehadaan. Through SCT, the healthcare services of HIV care got its wings strengthened. Over the following years, we opened similar care centres in Bengaluru (Sneha Care Home & Shining Star School), Mangaluru (Snehasadan & Sneathashram), Kerala (Snehatheeram), Secunderabad (SnehaKiran & St. Camillus Gramam), Tamil Nadu (Snehagram). A new ray of love and acceptance dawned in the lives of many through the instrumentality of these social and community centres, having the capacity to provide in-patient care for more than 600 people.

Ushering in the care of HIV infected Orphan and Vulnerable Children (OVC), SCT started one of its major care interventions in HIV scenario. This was the opening of Sneha Care Home in Bengaluru and Sneha Kids' Home in Mangaluru to respond comprehensively to the needs of OVC. It was started with the aim of developing a model program which would comprehensively address the multi-faceted issues of children living with HIV. Later on, SCT also opened a community centre at Krishnagiri for adolescent children with vocational training and capacity building initiatives. SCT has about 350 children living with HIV infection in its healthcare centres now. In fact, their future might be uncertain and their past, a painful reality. However, the children in the care of SCT live their present with zest.

SCT actively involves in out-reach programs blood donation and organ donation movement and occupational rehabilitation programs.



## Vision

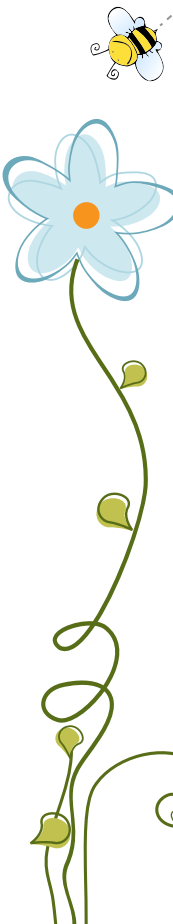
To provide comprehensive and holistic healthcare to the sick with a preference for the marginalized, neglected, lonely and those living with terminal infirmities.

## Mission

To be a positive force in addressing the comprehensive needs of the sick living with terminal infirmities and loneliness; to ensure their dignity and overall quality of life by motivating, caring, supporting and rehabilitating them, with priority for community care and palliative care of PLHA and for those terminally ill.

## Objectives

- ❖ To provide quality care for the neglected and needy sick
- ❖ To provide compassionate care to those in the end- stage of their disease
- ❖ To ensure them dignity of life, quality treatment and improved health
- ❖ To help them find meaning in life and to cope with their real life situation so as
- ❖ To live a dignified life in the society
- ❖ To train healthcare professionals in hospital and community care management
- ❖ To network with the Governments and other NGOs
- ❖ To help the society to develop its sense of Compassion, Care, Commitment,
- ❖ Competence, Generosity and be responsible companion to sick brethren.



# HEALTH CARE CENTRES OF SCT

## Snehadaan, Bengaluru

**S**NEHADAAN completes 19 year of healing mission in the church this year. Ever since the beginning of Snehadaan in 1997 it has been evolving and adapting according to the demands of the time in the health scenario of Bangalore in particular and Karnataka in general. It started as a destitute home and later shifted its focus exclusively to HIV care for a decade. Now the time has come to open wide its doors to various other sick and needy members of society.

We consider change as the yardstick of growth. Snehadaan is also changing to spread its wings to accommodate various types of sick brethren, abiding by our core values and following the footsteps of St Camillus.

### ► The Approach

From its experience in working with HIV infected adults and children, Snehadaan has developed a holistic approach to the delivery of care and treatment for any sort of sickness. It realizes that an integrated approach is the most effective way of care and support. This means that it emphasizes on personalized quality care, counselling support, rehabilitative services, exposure for visitors, networking, home visit and coordinating with likeminded institutions.

### ► Services provided by Snehadaan

Snehadaan provides a comprehensive care package to all the inmates without any discrimination:

### ► Comprehensive Care Approach

Snehadaan focus on the totality of the person. All our activities and programs are directed towards the total well-being of the residents. We consider each person as unique and treat everyone with the dignity that is due to a human person. We believe in the comprehensive approach to help people regain their health and dignity even after they are infected with HIV. The components of this model as we carry out at Snehadaan are as follows.



### ► Medical Care

Clinical management of the various opportunistic infections of our residents is a major activity of the programme. We have the services of a full time resident Doctor and we have the consultative support of Pain & Palliative Care department of St. Johns Medical College under patronage of Dr.Thara and Dr Shoba on a regular basis.

### ► ART referrals

When patients are in need of ART we start counselling them and their families and our doctor refers them to the Govt. ART programme at Bowring Hospital and St John's Medical College Hospital.

### ► Nursing care

Nursing team is coordinated by a nurse coordinator who is providing 24hours service to the patients. We have five nursing staff, who are also supported by Health care workers and Personal care manager for the total care of Patients. Nursing team promptly administers the treatment plan to each patient according to their unique individual needs.

### ► Counselling Support

Two counsellors are constantly monitoring and addressing various psychological and emotional issues of the inmates. They also work with families of the inmates to make sure that they are placed back home after recovery. Telephone counselling is also one of the tools we use to support the discharged inmates as part of continuum of care.

### ► Physiotherapy

The existing physiotherapy unit is upgraded with the support of Xerox Company which helps inmates to enhance the quality of care they receive. One part time physiotherapist's service is availed to address muscular pain, rehabilitative care, and physical disability of patients. Exercise therapy helps in improving general fitness, strengthening exercise helps in regaining the muscle power and endurance.

### ► Spiritual Support

Snehadaan is a faith-based organization and we integrate spiritual care along with other needs of our patients. We believe that through the support of spiritual resources from their unique faith traditions they can address many existential issues like meaning of life, death and the question of suffering. Even though our patients belong to various faith traditions or no traditions at all, they all seem to tap the spiritual atmosphere that is present at the centre for their benefit. Regular group prayer sessions are animated by brothers or volunteers to facilitate their life journey and make it more peaceful and meaningful.



## ► Rehabilitative Care

One of the goals of Snehadaan is to enable the patients to get better and live a normal life irrespective of their health conditions. During their stay with us we encourage them to explore all the possible ways to get back to normal life. If they need to change jobs due to their compromised health, we facilitate them to look for alternate options. We also provide ongoing support and counselling to those who have been rehabilitated after their treatment here.

## ► Volunteers and visitors on exposure

Snehadaan always receives visits from various organizations, public and private, local and foreign volunteers to learn the work of Snehadaan. Students from different medical and social work colleges, officials from different organizations and govt, personnel of NGOs and state agencies regularly visit Snehadaan.

## ► Staffing Patterns

Doctor	1
Nurses	5
Physiotherapist (part time)	1
Counsellors	2
Lab technician	1
Care givers	5
Receptionist	1
Cook	5
Driver	1
Maintenance	1

## ► Certain Figures of 2015

Total Admission	167
Total OPD	357
Non HIV	20
OVC	35
Palliative Care	33
Total Free cases	73
Partial free	44
Full payment	50
ART initiation	19
Cancer	2
Referrals	37
Total Physiotherapy sessions	1823
Total Number of Volunteers	69
Total Lab tests	981
Rehabilitated patients	17
In house death	09
Outside death	24



## ► COLLABORATION & LINKAGES

- ◆ St. John's Medical College and Hospital (SJMCH) for regular orientation visit. Case history undertaken by GFATM nurse trainees. Connected with Community Health Activation Programme (CHAP) group of Medical students in St. Johns to provide training on various aspects of HIV management.
- ◆ Organizing regular visit by GFATM Nurses trainees to NIMHANS (National Institute of Mental Health And Neuro Science).
- ◆ Catholic Health Association of India- Snehadan staff participated in the Catholic Health Association of Karnataka meeting held at Camillian Pastoral Health Centre.
- ◆ Snehadan is actively involved in all the programmes of Revised National Tuberculosis Control Programme (RNTCP). Our staff participated in the Bangalore dioceses level sensitization programme on TB at Paavan Bhavan on 19th November.
- ◆ Students from The International School Bangalore (TISB) are actively participating in the patient based programmes and visiting our centre every Thursdays.
- ◆ Providing training to Professional colleges and faith based organizations As a pioneer in the field of HIV Care in Karnataka, Snehadan provided training and experience sessions to a total of 30 different Professional colleges and some Faith based organizations.
- ◆ College and School reach-out program: Mount Carmel College, Jyoti Nivas College, TISB International School, Christ College, Oakridge International school.
- ◆ Liaison with private hospitals to function as a referral palliative care centre for palliative / terminally ill patients.



## Snehatheeram, Aluva, Kochi, Kerala

**S**nehatheeram (shore of love) began its service in the year 2004. It is a care home for persons living with terminal infirmities and loneliness with priority for the PLHIV. Snehatheeram is a 20 bedded facility. This Centre has been providing psychological, emotional and spiritual support, information about treatment options and has been involved in HIV awareness campaigns to prevent the spread of HIV/AIDS. Currently there are orphans and terminally ill patients in our care programme.

### *Major Activities*

- ◆ **Medical Care:** The medical care team at Snehatheeram strives to provide maximum comfort and care around the clock. Regular check up by doctor (twice weekly), administration of drugs, standard curative practices and excellent infrastructure facilitates enable the patients for a speedy recovery from their infections.
- ◆ **Psycho-spiritual Support:** By the grace of Jesus, Snehatheeram has an ambience promoting the psycho-spiritual development of the patients. Sharing with the Priests/religious of Snehatheeram community, peer group counseling and spiritual activities enabling them to cope with their disease, and thereby leading a more hopeful and optimistic life.
- ◆ **Nursing Care:** The nurses at Snehatheeram provide a high standard of nursing care to the patients. They provide medicine intake to the patients as per doctor's prescription, watch out for any changes in condition, report to the doctor and give attention to the personal care of the patients in tune with the Camillian spirituality. They provide nutritional supplement to the patients, maintain patients' records and case sheets.
- ◆ **Nutritional care:** Good nutritional support can improve one's health to a great extent. Snehatheeram tries to support our sick brethren to provide sufficient nutritional support, enabling them to fight their physical weakness and ill-health.
- ◆ **Referrals:** Snehatheeram is part of the network of NGOs, Government and other health facilities around. They refer beneficiaries to Snehatheeram for drug adherence, opportunistic infection management, care & treatment, spiritual and psychological support. Government health facilities, STD clinics and other NGOs also refer beneficiaries. Snehatheeram refers patients to ART centers and other health-care facilities.



- ◆ Watch-n-witness: Snehatheeram provides occasions for various age/social groups (especially youth and students) to physically visit us to know the real life situation of those reside here. By this we aim at sensitizing them against the social stigma against HIV infected.
- ◆ TB Program: Patients with TB also get referred to the center. The centre gets support from District TB unit to treat TB promptly and appropriately. During the time of discharge, we provide transfer letter to the respective TB unit.
- ◆ Staff Training: Snehatheeram always stood for development of its staff and thus improving standard of services. Providing a Camillian care to the sick and the affected is our pledge. Enabling our staff members to imbibe this spirituality is inevitable in this regard. Hence, we are sworn for it in our staff management and care.

### ► Sickness based categorisation–2014-15

St. Camillus Care Home	
Type of illness	No of patients
HIV	25
TB-HIV	02
Bed-ridden with HCV	01
TB	03
Leg Sore with Diabetic	01
Elephantiasis with Sore	01
Cancer	01
Paralysis	01
Cardiac	01
Back Pain	01
Asthma	01
Total	36



# Nanma St. Camillus

## Out-reach Care

Nanma reaches out to the sick at their homes and work places. with special preference for the persons living with HIV/AIDS.

### ► NANMA Action includes

- ✦ Home / workplace visits
- ✦ Ambulance service
- ✦ Life coping interventions and adherence to treatment
- ✦ Availing treatment for the needy
- ✦ Spiritual counselling and healing services
- ✦ Availing organizational supports/ departmental facilities (pensions, grants, nutrition)
- ✦ Occupational skill trainings and supports
- ✦ Networking with other organizations

### ► Nanma Activity Data– 2014 - 15

Home visits		'More Hearts'(cash/kind donations received)	
Fresh	76	Cash Donations	
Repeat	179	Kind Donations	
Support Ministry		Psychological Support	
Educational Support Bags/books/uniform/fees	15	Group Meetings	08
Table Fan	01	Individual Counselling	650
Pensions/Grants Availed	33	Telephone contacts	965
Health 'n' Hunger Concerns		Trainings	
Food Kit	60	Staff meeting	24
Clothing	02	Paper Bag Making	02
Medicine	184	Awareness Program	08
Walker	02	Institutional Support Ministry	
Spectacles	02	Care Centre Facility	34



Hearing aid device	01	De-addiction	02
Air/Water Bed	04	Orphanage Admissions	03
Ambulance/Vehicle Service	24	<b>Self-Empowerment Ministry</b>	
Hospitalization	07	Tailoring Machine	03
<b>LifeDrops: Blood Donation</b>		Fishing Net	01
Donors	20	Small Scale Business	06
Recipients	09	Job Placement	05
<b>Spiritual Accompaniment and Healing services</b>			
Visiting Sick by Camillian Fathers	25		

### ► Human Resources

Director	1
Administrator	1
Consultant doctor	1
Nurse	1
Care Coordinator	1
Outreach worker	1
Janitors	2
Driver	1
<b>TOTAL</b>	<b>9</b>

### ► Institutional visits and volunteering activity – 2014-15

Institution	Group size	Purpose
St. Philomena's School	60	Exposure visit
Rajagiri college	35	Exposure Visit
Parish Visit	100	Exposure Visit



# SNEHASADAN

## MANGALORE

**S**nehasadan is the third ministry initiative of Camillians in India and it was blessed and inaugurated by the Bishop of Mangalore on February 4, 2001. Snehasadan began with the intention of serving the HIV/AIDS infected people of Dakshina Kannada region. It is a 56 bedded holistic care centre. Apart from the residential medical service, the centre is involved in advocacy programs to mainstream the HIV infected and affected through linkages and network with other stakeholders in the region.

### ► Patients Served in 2014-15

New Admissions	11
Re-admissions	27
TOTAL	38

### ► Death in 2014-15

Children	02
Adults	05
Total death	07

### ► Details Of TB/HIV Treatment

Male	05
Female	02
Male child	01
Female child	03
MDR TB	01



## ► Institutional visits– 2014-15

1	Morning Star School, Bajpe	67
2.	St Dominic School	54
3.	St Theresa School	25
4.	St Mary's HS	13
5.	Mount Carmel School	30
6.	St.Aloysius Higher secondary school	87
7.	New Mangalore college of nursing	35
8.	Athena college of nursing	36
9.	Alva's college of Nursing	140
10.	SCS college of nursing	127
11.	Father Muller's medical college	30
12.	Father Muller's college of nursing	40
13.	Father Muller's school of nursing	51
14.	Kasturba Medical College	60
15.	Tejasvini college of nursing	51
16.	Nethaji college of nursing	66
17.	Yenepoya college of nursing	96
18.	AJ Institute of Medical Science	2
19.	KS Hegde Medical Academy	10
20.	Nitte Institute of Physiotherapy	6
21.	AB Shetty Dental college	30
22.	St Aloysius college of social work	62
23.	Alva's college of social work	50
24.	DR. MV Shetty college of social work	34

25.	Manipal college of social work	36
26.	Roshni Nilaya school of social work	47
27.	St. Joseph Engineering college	98
28.	St.Agnes college	48
29.	Karnataka Theological college	13

Sl.No	Parish Visit	Number Of Visitors
1	ICYM Palakkad parish	20
2	Pompie church kaikamba	50
3	St.Alphonsa church kankanady	25
4	St. Lawrence church	10
5	Holy Redemer church	75
6	ICYM valpady	20
7	St. Francis Xevier Church Anegudde	15
8	YCS St. Domenic Church, Ashok Nagar	10
9	St. Antony Church Mangalore	24
10	ICYM Corpus Christi Church Moodbidri	22
11	St Paul Ward ,Bajpe Church	15
12	Pezar Church Mangalore	16
13	St. Francis Xevier Church Ferar	15
14	St.Ignatius of Loyola church paladka	20
15	St. Joseph's worker church vamanjoor	18



16	Bejai church	07
17	Holy Cross church Kulshekar	30
18	Queen of Apostholic Convent	35

Sl. No	Associations	Number Of Visitors
1	Women Association Moodbidri	05
2	Spandana Trust Jeppu	40
3	Bangalore Riders Association	16
4	Infosys	02
5	Social democratic of India	20
6	MCODS mangalore	25
7	Mangalore Round Table	03
8	Cognizand Global tecnology	25

### ► Human Resources

Director	1
Administrator	1
Consultant Doctors	3
Nurse	2
Counsellor	1
Outreach worker	1
Janitors	2
Driver	1
Cook	2
TOTAL	15

## SNEHAKIRAN, HYDERABAD

### A Holistic Care Centre for people living with HIV/AIDS

Snehakiran, the Community Care Centre provides comprehensive communicable disease-related medical services. It is a 65 bedded inpatient health facility.

#### ► The services offered include:

- ❖ Outpatient and inpatient services
- ❖ Outreach programmes and infection control measures
- ❖ Referral/ linkages with governmental and non-governmental institutions

#### ► Key roles of the centre:

- ❖ Link member institutions with national programmes.
- ❖ Advocate the rights of PLHIVs and care and support centres
- ❖ Provide hands-on- training on communicable diseases with special focus on HIV/AIDS to the doctors, nurses and health care providers
- ❖ Offer distance mode of education
- ❖ Assure quality care in the centre.

#### ► Home Based Care

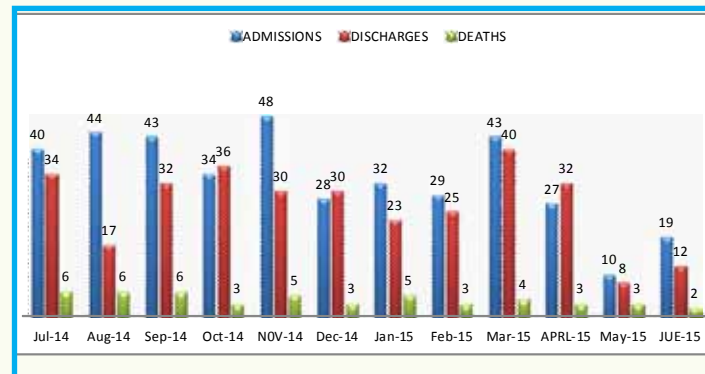
This is a venture of the year. This home visiting program provides structured visits by a group consist of a medical officer, nurse and social worker. These programs support patients by providing health check-ups, screenings, referrals, parenting advice, and guidance with navigating other programs and services in their community. The programs also monitor ART drug adherence and follow up health progress

Dental Check-Up – Dental health check-up for the HIV infected patients was one of the major programs of World AIDS Day this year. It was a collaborative program conducted with the help of The Army Dental Collage staff.

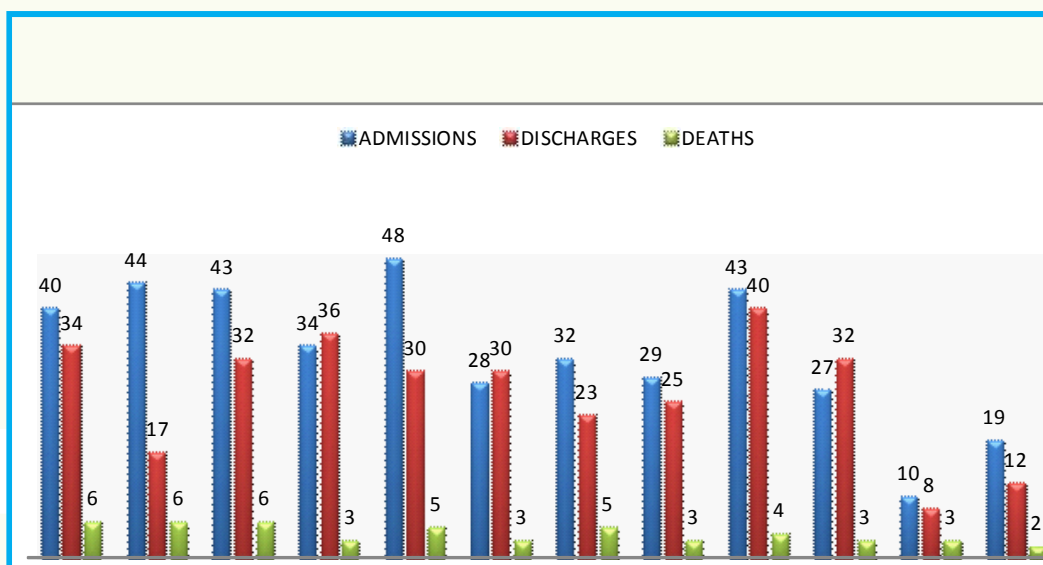
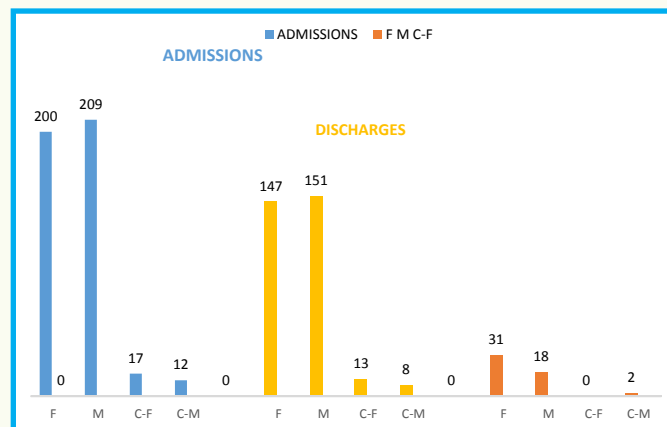


## ► Performance Highlights 2014-15

### *Admissions, Discharges and Deaths*



### *Gender wise data of admissions, discharges and deaths (Adults and children)*





## ► COLLABORATIONS

- ◆ **Involvement of students:** - The centre involves students through its awareness programs at educational sector. Resource person from the centre visit schools, colleges and present about the activities of our centre and thereafter find out the interested candidate to play the role of volunteers to involve in the charitable activities of the centre.
- ◆ **Contributions through kind:-** As part of fund raising program, the centre has adopted a different way of approaching well-wishers like shop owners and farmers who can contribute various grocery items as contribution in kind.
- ◆ **Collaboration with Save A Family:** - We are collaborating with Save a Family unit of India. The project supports us to meet the lab needs of the centre. Besides, they also supported us financially for other needs of the centre.
- ◆ **Individual donors:** - Some potential volunteers of the centre have rendered their service at free of cost to the centre. Dr. Ravi and family is one among them. On the other hand other well wishers financial supported to purchase grocery items. Mr. George and family from St. Anthony's church is one of such dedicated well-wishers.

### *Human Resources*

Director	1
Administrator	1
Doctors (RMO)	1
Nurse practitioner	1
Nurses	4
Clinical Coordinator	1
Care Coordinator	1
Janitors	3
TOTAL	14



# RESIDENTIAL CARE TO ORPHAN AND VULNERABLE CHILDREN (OVC)

## Sneha Care Home (SCH)

*A Home of mutual love and care*



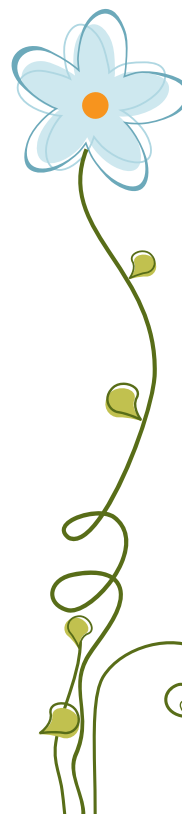
It was started in 2008 with the aim of building responsible adults through value education and aptitude-based skill development. Now the centre takes care of ninety six children. Shining Star School is the residential school in our campus where using the National Open School Curriculum we provide education to our children. With the aim of improving the talents and aptitude of children we also provide them training on painting, music, dance, athletics and various sports and games. Thus the model is evolved to meet the long term needs of childhood development, adolescent issues, personality development, need - based education, value system to sustain them for life, employment, family and community acceptance

*Clinical department*

Intervention	Outcome
Preventive and promotive health care practices	Less frequent opportunistic infections, few cases of hospital admission, less use of antibiotics, zero viral load among the children who are on ART and cutting down on medical expenses.
Nutritional care through following a proper dietary pattern and micro-nutrient and additional food supplementation	Helped the malnourished children to transit the borderline, prevention of OI's, children staying healthy constantly.
Frequent health assessments through specialist health professionals	Early tracking of health issues and immediate prevention and consistent health monitoring and evaluation.
Hygiene monitoring, education and care	Less skin issues, prevented spreading of skin related diseases, enhanced personal care and cleanliness.
Facilitated health related researches	Easy monitoring and evaluation of the outcomes of the programme and planning effective strategies.
Periodic health data capturing and analysis	Useful for internal monitoring and evaluation and as research data.

*Co-curricular department*

Intervention	Outcome
Facilitation of children's parliament	Made children aware of the democratic decision making process, ensured children's voice is reflected in organizational decision making, developed the skills of children with regard to reflection, discussion, strategy planning and decision making.
Child protection policy review and implementation	Making sure children's rights are protected and "the best interest of the child" is adhered to in all programme planning and execution.
Implementation of the sports module	Practical dissemination of life skills and values made the children to assimilate them easily
Celebration of special days in a culturally relevant manner.	Made children to understand the importance of various feasts, enhanced cultural sensitivity and ensured that children miss their home or belongingness to the community.





Facilitated research on implications of yoga for CLHIV	Helped children to learn Yoga scientifically, self-disciplining and relaxation, and impact of it on their health.
Organized co-curricular trainings participation in competitions	Aptitude auditing, enhanced skills, confidence and self-image,
Management of club and house system.	Increased children's participation in activities, diminished children's dependence on adult support in decision making and execution of tasks and personal skill development.

### ► 6th anniversary celebration 2014

Sneha care home and shining star school celebrated its 6th anniversary on 4th of august 2014. The programme which started at 4 pm, was inaugurated by Dr.Manish kumar, Director USAID OVC programme, KHPT and chaired by Fr.Vince koickal, Fr. Mathew Perumbil, Fr.William and Priyanka. On the same occasion we released the annual report of Sneha care home and inaugurated the extension of children's washing area and staff refectory. The stunning performances of the stars in Sneha care home added much colour to the programme.

### ► Blessing of Dental clinic

One of our challenges with regard providing medical care to our children was treating dental issues. One of the dentists who visited the Centre offered his voluntary assistance if we installed a dental chair in our Centre. The installation of the dental chair was inaugurated by Fr. William, the superior of the campus on august 4th 2014. It has been very useful for all our children.

### ► Champion In Me

#### *5k Run 2014*

In connection with World HIV/AIDS day, Sneha Care Home in association with Bangalore School Sports Foundation and Runners High organized Champion in Me 5 K Run/Walk, on 23rd November, 7.00 am at Snehadaan Campus Sarjapura. The principal aim of this event was to make the society collectively think about the future of these children and effectively respond to their needs and aspirations. Moreover, this year we had three specific aims for organizing this event: to make the society aware about the fact that these children can have a bright future if we work together, to tell the children that they can reach any heights if they have the will and determination, and WE are there for them to help them.

Around 800 people from different fields like film industry, companies, schools and colleges came for the fourth edition of champion in me 5k Run/Walk.

### *Arts and Sports Day*

The annual champion in me arts and sports event for CLHIV, which is conducted in collaboration with KHPT and Bangalore school sports foundation, was held on 29th and

30th of November 2014. We were able to bring around 500 children from 10 institutions in Karnataka and Tamil Nadu.

### ► **Starry night 2014**

Starry Night is a program to bring together all our well-wishers, friends, benefactors and people who are closely associated with us for a common Christmas celebration and dinner with the stars of Sneha Care Home. This year it was held on the 15th of December from 6.45 pm and around 450 people attended the programme.

During this auspicious occasion Baby Ellickal, President of Sneha Charitable Trust presented the best volunteer award to Mrs. Lorane, Mrs. Mamtha and Mrs. Juliet and the best institutional supporter award was given to International School of Bangalore.

There were beautiful performances by Sneha care home, Snehagram and Swanthana children. The mellifluous voice of Cicily the famous south Indian play back singer made the occasion very gorgeous. Performances were dazzling, food was delicious and that day was inspiring.



### ► **Kolar outreach camp 2015**

Sneha care home in collaboration with precious blood sisters (Kolar) manages an outreach program in Kolar district through which we take care of 83 children. This year the team from Sneha care home conducted two summer camp for the children (pre-adolescent and adolescent). The main aim of the summer camp was to provide the children with different activities like arts and craft, music and dance, awareness session and life skill trainings.

The St. John's pediatrics team had medical screening and the participants were gifted with educational kits and clothing.

The Camp ensured hope restored in individuals and communities, through collective efforts to overcome the challenges of HIV and AIDS.



## ► Collaborators and alliances

### ➤ Karnataka Health Promotion Trust

- ◆ Programme guidance
- ◆ Financial support
- ◆ Learning site status under the mac AIDS programme
- ◆ Partner for conducting champion in me

### ➤ St. Johns medical college and hospital

- ◆ Medical treatment
- ◆ Conducting research
- ◆ 3. Learn for life foundation, USA
- ◆ Finding sponsors for the children from USA
- ◆ Support in data organization and management

### ➤ Boston University

- ◆ Conducting research
- ◆ Virtual and actual internship by public health students

### ➤ International Service Agency (INSA-India)

- ◆ Conducting life skill training for children
- ◆ Facilitating children's parliament
- ◆ Training and facilitation for drafting the child Rights Policy manual

### ➤ Louise foundation for ballet

- ◆ Conducting ballet classes for children
- ◆ Organizing children's ballet performances

### ➤ Ananya Trust

- ◆ Athletic training for children
- ◆ Organizing running events

### ➤ Runners High

- ◆ Athletic training for children
- ◆ Conducting fundraising and amateur running events for supporting the running programme
- ◆ Logistic support for 'Champion in me 5 K Run'

### ➤ Bangalore School Sports Foundation (BSSF)

- ◆ Conducting the Champion in Me sports events
- ◆ Ensuring SCH participation in School sports events held in the city

### ➤ The International School Bangalore (TISB)

- ◆ Mutual Learning programme
- ◆ Donated the funds raised by students for construction of our washing area.

### ➤ Field Services & Intercultural Learning (FSL India)

- ◆ Placement of volunteers with Sneha Care Home

### ➤ Joy Alukkas foundation

- ◆ Financial support for the programme

### ➤ Dan Hospitality Pvt Ltd

- ◆ Financial support for the entire programme

### ➤ Aarattukulam constructions

- ◆ Financial support for provisions

## ► Corporate Alliances

- HCL Technologies
  - ◆ Supporting a project for micronutrient supplement for children
  - ◆ Employ engagement
  - ◆ Buying books for the Library
- Timken India
  - ◆ Supported the construction of Girl's Hostel in Snehagram
  - ◆ Employ engagement
- National Instruments Systems, India PVT. LTD
  - ◆ Supports the nutritional programme
  - ◆ Employ engagement
- Wells Fargo, India Pvt. LTD
  - ◆ Supports the academic programme by supplying academic goods
  - ◆ Employ engagement
- Toshiba
  - ◆ Provided computers and software for the Early Learning Centre
  - ◆ Provided chairs for the class rooms
- I-Value
  - ◆ Provided solar water heater system for children
- Allergis
  - ◆ Provides stationary and cosmetic items for children

## ► Shining Star School is an accredited school now...

The long awaited dream of Sneha care home to function Shining Star School as a formal school through getting the accreditation of OBE (Open Basic Education) scheme of National Institute of Open Schooling. The grant of registration is a fruit of much effort and long wait. The Open Basic Education programme has been recognized by the government of India as equivalent education to the formal school for purposes of higher education and employment.





## ► Celebrating life

We celebrated all the national and regional festivals in Sneha Care Home like; Ugadi, Pongal, Independence day, Gandhijayanthi, Christmas, Republic day, Ganesha Chaturthi, Karnataka Rajyostava, Easter etc., with their traditional flavours. It was done to ensure that the children did not miss any festivals which they would have celebrated if they were at home. This can not only trace out the location for a temporary plan but also the natural remedy to accept the truth in its radical issues to the core

## ► Human Resources

Director	1
Programme Manager	1
Administrator	1
Doctors (RMO)	1
Co-curricular Coordinator	1
Psycho- social Coordinator	1
Clinical Coordinator	1
Care Coordinator	1
Teachers	10
Janitors	3
TOTAL	21

## ► Exposure Visit Details

SL.NO	Name of the institution	No of persons
1	St. Joseph School 1st batch	40
2	St. Joseph School 2nd batch	35
3	St. Joseph School 3rd batch	45
4	Oakridge School	15
5	Nimhans GFATM	65
6	Christ University CSA	50
7	Carmel School	18
8	Carmel College	60

9	Wells Fargo	20
10	FSL (Field Service learning) volunteers	18
11	The International School of Bangalore	42
12	Hampshire International School	22
13	Jeevodaya Working women hostel	8
14	St. John's nursing college	4
15	Delhi SACS	3
16	Karnataka health promotion trust	7
17	Allegies	60
18	Jesus Youth	30
19	Amazing grace church	40
20	Kasavanahalli parishners	30
21	Hebbagudi Parishners	15



## SNEHAGRAM, Krishnagiri, Tamilnadu

**S**nehagram envisions to ensure quality of life and future of the orphan and vulnerable children living with and affected by HIV and lead them to a healthy and productive adulthood by comprehensively addressing their needs on education, health, psycho-social and emotional well-being, vocational training, life skill education and value formation.

### ► Snehagram Statistics

No of Boys	27
No of Girls	24
Total	51

## PROGRAMMES AND THEIR FEATURES

### ► Academic programmes

In Snehagram, children are facilitated to follow the curriculum of National Institute of Open Schooling (NIOS). We intend to cover as many children as possible under this stream of education for taking their secondary and higher secondary examinations. 'Teacher in Print' kind of textbooks enables interactive and activity-oriented learning. Curriculum is up-to-date to meet the changing requirements of the society and to provide the right kind of education accordingly. The curriculum of NIOS is designed optimally to facilitate self-directed learning.

The students are also facilitated with the opportunity for group learning and online educational support. With help of the audio visual studio setup at the Learn for Life Centre, children will have the opportunity to interact with the resourceful persons in India and abroad on various subjects through Skype talk or Google hangout.

### ► Vocational Training & Community College

Snehagram imparts job oriented classes and training coupled with academic programs under NIOS curriculum. At present students are trained in Language and Communication, Data Entry, Tailoring, Embroidery and craft works, and farming.

### ► Self-directed Learning & Online Educational Support

In Self-directed learning the teacher's role is minimal and the students themselves plan their future and set the goals accordingly. It would promote natural development of self-confidence, nurture their abilities in decision making and make them capable of taking initiatives. The absence of coercive schooling will induce increased life satisfaction. It also provides them opportunities to pursue wider interests and groom them to develop out-of-box thinking in life.

Group learning allows students to develop problem solving, interpersonal, presentational and communication skills, all beneficial to life outside the classroom.

### ► Community College

As a part of Vocational Training initiatives Snehagram plans to commence a community college by June 2015, to provide job oriented skills training and placement to CABA.

*Following are the courses we envisage to offer:*

- ❖ Retail Management
- ❖ Hospitality
- ❖ Office Management
- ❖ BPO
- ❖ Pre School Teaching (Early Childhood Care Education)
- ❖ Video & Photography
- ❖ IT Enabled Services
- ❖ Catering Assistant
- ❖ Garment Making

## HEALTH MANAGEMENT

### ► Medical Support

Children receive ongoing medical support to manage their health. The preventive, promotive and curative model of health is followed, whereby the focus will be on prevention of opportunistic illnesses and promotion of healthy living practices. There is regular monitoring and evaluation of their health and routine investigations to determine their immunity status and viral load. They are integrated to the treatment programmes under the Anti-Retro Viral Therapy provided by National Aids Control Organisation (NACO).

Snehagram has tie up with St. Johns Medical College, Bangalore, and Snehadaan Community Care Centre for PLHIV along with the online support of doctors for the medical care of the children.





## ► Nutritional Care

Nutritional care has an important role in the management of HIV. Nutrition helps in maintaining desirable body weight, minimizing the health problems arising due to HIV and helps in building a strong immune system. Children are given nutritional education along with the provision of a balanced diet.

## ► Psycho Social Support

Adolescence is the period of storm and stress. The children will be undergoing series of existential queries regarding their HIV infection and related complications, social acceptance, stigma, discrimination, the orphan hood, loss of siblings, and the feeling of loneliness. They require professional assistance in leading a positive life.

Children undergo regularly Yoga training, Spiritual guidance and exercises, family life education and social life, sexual health education, disclosure of HIV infection, value based formation, personality development and self-esteem building, life skill education and counselling support for various emotional needs and challenges.

They are also encouraged to maintain their family relationships and it is a policy of the program to keep the family and relatives of the children as active partners in building their lives.

Snehagram in collaboration with NIMHANS and KHPT conducts adolescent specific counselling and group work to equip the children to cope with their psychosocial problems.

## **CO-CURRICULAR ACTIVITIES**

Co-curricular activities are given equal prominence with all other programmes at Snehagram. All the children have opportunity to take part in games like Football, Cricket, Volleyball, Basketball, Handball and Running. Children also have opportunity to participate in the events like 'Champion in Me' which is a customised cultural and Sports event conducted annually for CABA in Karnataka.

Along with these sports and athletic programs students are also trained in other co-curricular activities such as: Dance, Yoga, Gardening, Exposure visits, Creativity development programs and Monthly Cultural programs. All these activities are devised to help children in value formation & life skill training, resilience building & coping and in preparing them to face challenges in life.

## **LEADERSHIP TRAINING PROGRAMMES**

Developing leadership qualities in children is one of the focus areas of the programme. Leadership qualities are nurtured in the children through various training programmes and workshops. Programme also aims at developing Peer Leaders from among the children to train the children in the communities.

## **CHILD PROTECTION POLICY**

Snehagram has adopted child protection policy to safeguard the rights of children. A child protection committee is formed with two members from the staff and four from the students. Child protection protocols were also developed and adopted at the Centre in consultation with the children.

## **LEARNING SITE INITIATIVES**

As an innovative and pioneering program specifically to address the complex challenges of caring the adolescents living with HIV, Snehagram partners with Karnataka Health Promotion Trust(KHPT), and USAID to be a learning site whereby we develop good practices and models to guide and support other programs in the field. As a learning site we are engaged in developing best practices, training and hand holding for staff from other centers, operational research, advocacy and policy influencing to make the lives of these children happier and brighter.

## **OUTREACH PROGRAM**

As the vision of Snehagram is to reach all children living with HIV, we partner with many organizations who are involved in the community based programmes to support, guide and intervene to make their lives healthier and happier. We offer Camps, Short Term Stay, training in vocational skills and psychosocial support. And also our children offer peer mentoring to the children in the community.

## **RESEARCH**

The program is developed in such a way as to capture our learning and experiences in managing and guiding adolescent HIV issues in an effective manner. A good database is created to track the growth and development of these children especially in the areas of Health Management, Psycho Social Care and Integration strategies.

## **NEWSLETTER**

Snehagram publishes a bimonthly newsletter - Snehavaani. The newsletter covers all the events of Snehagram during the period. The major share of the contents is contributed by the children themselves. It also gives a platform for children to nurture their literary skills.

## **VOLUNTEERS' PROGRAMME**

Volunteers are encouraged to be a part of Snehagram activities. Volunteers can either be involved in academics (teaching) or vocational skill-based trainings. Volunteers choose between various options depending upon the time available. Possible options include spending multiple weekends, 1 month, 3-months or more at the Snehagram campus.



## ► FUNDING SUPPORT

- ◆ Manos Unidas, Spain
- ◆ CEI
- ◆ Anglo-Irish province
- ◆ Camillians India
- ◆ Learn for Life Foundation, USA
- ◆ Timken Foundation, USA

## ► Institutional visits and volunteering activity - 2014

Institution	Group size	Purpose
KHPT	40	Outreach Program
Christ College Teachers	4	Training children

## SNEHA KIDS AT SNEHASADAN, MANGALORE

'Snehasadan', a unit of Sneha Charitable Trust, was established in the year 2001 for serving the HIV infected people of Dakshina Kannada by the Order of the Ministers of the Infirm, popularly known as Camillians, which is an international faith based organization that has been involved in the health care activities for the past 450 years. From then onwards the organization has aimed to scale greater heights putting all possible efforts. Gradually like a small plant, it is trying to flourish its several buds into beautiful flowers, stems into strong branches and accumulating the strength to become a banyan tree. The Centre still continues with the vision of its founding members, though the Orphan and Vulnerable Children (OVC) component was added to its care plan. It provides holistic care which includes medical care, nursing care, nutritional support, counselling, recreational activities and spiritual services, according to the needs of the children. It provides value based formation and education to children to help them to build self-esteem and confidence. At present it cares for 40 children (21 boys and 19 girls) who are under the age group of 3 to 16 years. Snehasadan works in collaboration with various NGOs and Government programmes.

### ► Services rendered to the OVC are as follows:

<i>Service Components</i>	<i>Details</i>
Education	The children are provided with the unique opportunity to study in Rosa Mystica School and the college in the same campus. The quality education helps each student to be creative and unearth their hidden potential in order to develop an integral competence. During this academic year two of our children are going to appear for the SSLC examination and two for the pre university examination. The performance of the children is satisfactory. We have few children doing their professional studies in various colleges.





<i><b>Service Components</b></i>	<i><b>Details</b></i>
Medical Care	All the OVC are helped to restore their health to the highest potential by providing maximum care and comfort. ART adherence is given importance so as to maintain the CD4 count. Prophylaxis supplementation is carried out on the daily basis. Regular check-up and standard curative practices enable the patients for a speedy recovery from their opportunistic infections. The children are referred to the ART Centre and other higher facilities for further treatment. Health education classes and aerobic exercises have been taught and monitored by the Nitte Institute of Physiotherapy.
Counselling	Counselling helps children to cope with their respective academic and other emotional problems. The children with difficulties in studies and those exhibit inappropriate behaviour are focused.
Value education and personality development	They are offered with value education to set high human and moral qualities that everyone must possess to lead a socially productive life. Personality development includes the activities to improve the self-awareness and identity, develop talents and potential, enhance quality of life and contribute to the realization of dreams and aspiration.
Spiritual Services	The desire for God is written in the human heart, because man is created by God and for God; and God never ceases to draw man to Himself. The children in the Centre are offered with the spiritual exercise to enrich their spiritual life. We draw our strength from the daily Holy Eucharistic Celebration in the morning at the Centre. The children and inpatients pray together with the Snehasadan family in the evening and bless each other daily in our Chapel.
Nursing Care	The nurses at Snehasadan strive to provide a high quality nursing care to the children. They administer medication as per doctor's prescription, monitor them frequently and report to the doctor if any changes occur in the health condition. They emphasize on giving attention to the personal care of the children in tune with the Camillian spirituality. They provide nutritional supplement as required and also maintain health records and case sheets.
Nutritional care	Good nutritional support can improve one's health to a great extent. Snehasadan tries to support our sick brethren here to provide them sufficient nutritional support, enabling them to fight their physical weakness and ill-health.

<i><b>Service Components</b></i>	<i><b>Details</b></i>
Watch-n -witness'	Snehasadan provides occasions for various age/social groups (especially youth and students) to physically visit us to get to know the real life situation of those reside here. By this we strive to eradicate the social stigma towards the PLHIV. By mingling with them the stigma is reduced to some extent. Thus we also try to promote the virtue of compassion.
Share your care	"No donation is too small to make a difference "  Snehasadan stimulates, encourages, appreciates and accepts the hearty donations of the good hearted persons (cash, kind, food, services). We aim at both getting to sustainable support for this care home and cultivating the virtue of sharing even at the pinch of one's own sustenance. The children keep the donors and well-wishers in their prayer.
TB Program	The children infected with Tuberculosis are referred to the nearby District Hospital Tuberculosis Centre. They provide the anti-tuberculosis medication free of cost. The programs have got a talented program to deal with its range of trust activities in the traceable and moveable attitude towards the said program.
Recreational facilities	Recreation is an essential element of human biology and psychology. All the children in the Centre are offered with recreational facilities such as daily indoor outdoor games, watch television on Sunday for 3 hours, yearly taking the children for the tour.

## Events and Celebration of 2015

Dr. Kripa Amar Alva, the chairperson of the Karnataka State Commission for Protection of Child Rights (KSCPCR) visited the Centre. Her visit edified the Staff and Children as she congratulated the noble work being done in her own homeland Mangaluru for the welfare of children.

Mr. Mithun Rai, the President of district Youth Congress visited Snehasadan on his birthday and distributed sweets to the Children.

Mangaluru North MLA B.A. Mohiuddin Bava visited Snehasadan on his Birthday (15th March) and distributed fruits to our Children and inmates.



## ► Republic Day

On 26th January 2015, 66th republic day was celebrated. On this occasion Fr. Antony Kunnel, Director of Snehasadan unfurled the national flag and delivered the message.

## ► Independence Day

The 68th Independence Day was commemorated on 15 August 2014. After the solemn Eucharistic celebration at 7.30 am in the chapel, all the inmates of Snehasadan assembled in front of the entrance. Ceremonial hosting of the flag was done by Dr. Prakash N. Tharian, Retd. Professor of BSW, School of Social Work, Roshni Nilaya, Mangalore, and gave the message on the occasion. The Parade of Snehakids showed their patriotism. The activities of the day made them acknowledge the hard work and sacrifice of the freedom fighters.

Home day Celebration: The most exciting event of the year was the "Homeday 2015" which was held on 19th April 2015. The chief Guest of the day was Most Rev Dr. Leocir Pessini MI, the Superior General of the Ministers of the Infirm, Camillians. Most. Rev. Dr. Aloysius Paul D' Souza, the Bishop of Mangalore presided over the programme. Presence of honourable guests Rev.Fr. Baby Ellickal MI (Provincial, Camillians India), Msgr. Denis Moras Prabhu (Vicar General of Diocese of Mangalore), Rev. Sr. M Wilberta BS (Superior General, Bethany Congregation). Mohiuddin Bava MLA, Dr. Prem Kumar, (former Registrar, Rajiv Gandhi Health Sciences, Bangalore) Prof. Dr. Ravi Vaswani, (former Registrar of Yenepoya University), Mr. Alben Menezes (President of UCA) added beauty to the Day. Fr. Antony Kunnel MI, Director, delivered the welcome speech. The performance of Snehakids was mind blowing. Fr. Teji MI, Administrator, expressed words of gratitude.

## ► Dental Camp conducted

A B Shetty Memorial Institute of Dental Sciences, Conducted Medical camp on 13th of December at Snehasadan.

## ► Christmas Day Celebration

The eve of Christmas was celebrated with much devotion. The entire home was adorned with sparkling lights and twinkling stars in celebration of the birth of Jesus Christ the Saviour. Carol singing, colourful cribs and vibrant Christmas Trees added colour to the festivity. The real meaning of Christmas lies in inculcating the values of Jesus, in having him in one's heart and following his path.

## ► Champion in Me

A total of 32 Snehakids participated in "Champion in Me" at Shining Star School of Sneha Care Home on 28th and 29th of November, organised by Sneha Charitable Trust in collaboration with KHPT (Karnataka Health Promotion Trust). It was a great event for the children to exhibit their talents and potential. They bagged many prizes and medals.

### ► World Girl Child Day

International Girl Child Day was celebrated on 24th September. The theme for the year was focused on adolescent girls and the Sustainable Development Goals to achieve gender equality by 2030. Sr. Sharlet BS spoke to them on the importance of the day. 20 girls from Jeevadaan and Samvedana participated in it. The flag making brought their talents and tug of war reminded them they too are strong.

### ► Rangoli/Onam

Onam celebration was marked with Rangoli making competition. The creativity did come out in form various beautiful art as they were competing each other. The Teachers from Rosa Mystica School and few Medical Students from KMC joined for the 'Onam Sadhya'.

### ► St. Camillus Day

Following seven days of Novena in honour of St. Camillus and prayers for the sick, the founder's day was celebrated on 14th July. Jeevadaan staff and inmates were present for the celebration. The dancing and singing added colour to the 'Paani Poori evening' which was concluded with a delicious dinner.

### ► Navarasa Uthsav

Snehakids participated in "NavarasaUtsav", a cultural evening for the differently abled, mentally handicapped, children and adults at St. Agnes Auditorium. There were representatives from various institutions. Honourable Minister of Health and family Welfare U T Khadar inaugurated the function. The viewers were delighted to see the dazzling performance of Snehakids.

### ► Vanamaholsava

"Plant together...lets make the world greener." On 4th July Staff and Snehakids set apart to plant few trees in the garden and surroundings to make the earth clean and green. The Children are motivated and interested in watering the plants and occasional caring.

### ► Human Resources

Director	1
Administrator	1
Doctors (RMO)	3
Care Coordinator	1
Counsellor	1
Nurses	2
Health workers	2

Janitors	2
Kitchen Staff	2
TOTAL	21





# INNOVATIVE INITIATION OF SCT

## Camillian Task Force

**B**orn out of a need to address the acute sense of despair and helplessness resulting from natural calamities and disasters, the CTF was formed and made operational in 2004 with a focus on providing rehabilitative care for disaster survivors. Camillians are well-equipped to provide pastoral care, trauma counselling, and other disaster relief activities.

The Camillian Task Force (CTF) is one of the various initiatives of the Ministers of the Infirm (Camillians), a religious institute of the Catholic Church. CTF was launched in 2001 and since then, CTF has become a significant part of the mission of the Camillians to promote health and well-being of the people.

The CTF is a joint venture beyond Camillians where all like-minded people collaborate in witnessing the merciful love of Christ, united by their faith in Jesus Christ and motivated by the Camillian Charisma.

CTF responds as a team to every type of disasters throughout the world, both locally and worldwide. Since 2004, CTF has responded to nine disasters and provided financial, psycho-social and rehabilitation support to the poor victims.

CTF consists of many health care professionals and support personnel who offer their competence so as to lessen the consequences of devastating natural and man-made disasters, such as earthquakes, floods, plagues, drought and the consequences of armed conflict.

### ► Aims and Priorities

We carry out a well-established array of activities in the area of healthcare: prevention, curative treatment, pastoral care, rehabilitation and education. However, given the signs of the times, the members of the Order felt the need for a stronger presence in the area of disaster relief.

The impact of disasters on people is extensive. They often have significant pastoral, medical and humanitarian needs. The members of CTF offer support to lessen the trauma of sudden loss, injury and disaster-related suffering.

Therefore, the aim of the CTF is to provide integral care in the aftermath of disasters such as drought, famine, mass displacement, floods and so on, when the life, health and livelihood of people is at risk unless immediate action is taken.

Camillians are well-equipped to provide pastoral care after disasters, particularly trauma counseling, an area often overlooked by other organizations: the Order specializes in the area of pastoral care; trained lay personnel and volunteers are available for counseling; there are many pastoral centers run for this intention that entitle the institution to shape its role in the area of counseling for the traumatized, filling a gap in the many services provided after a disaster. The institution now has the opportunity to utilize the CTF to facilitate and even offer training in the areas of trauma counseling and disaster relief.

### ► Our Mission

**To witness the merciful love of Christ for the poor and the sick, especially when affected by disasters, whether man-made and/or natural.**

## Welcome ... Join CTF!

Any man or woman who believes in the mission of CTF and wants to serve those affected by disasters is welcome to join the CTF!

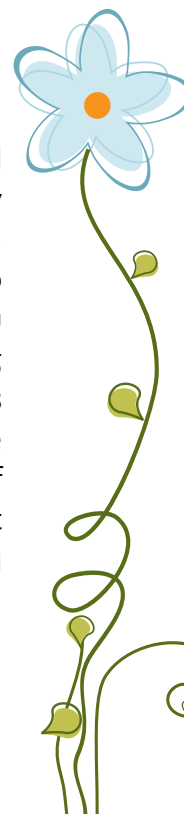
Lack of specialization in the area of health care is not an obstacle for any genuinely committed individual who wants to work hard and be a part of the team.

People willing to help others in distress in whatever way are welcome to join the CTF!

CTF is committed to collaborate with like-minded organizations and the local church, i.e., the diocese, and offers its services to those in need regardless of their faith.

### ► MEDICAL RELIEF WORK OF CAMILLIAN TASK FORCE IN JAMMU & KASHMIR

Camillian Task Force India in collaboration with Catholic Social Service Society of Jammu and Kashmir Diocese, Caritas India, members from different Religious congregations namely (CSJB, OP, SABS and SD), St. Philomena's Hospital Bangalore, Gandhi Medical College, Hyderabad and lay volunteers got together in Srinagar to conduct medical relief camps to diagnose and distribute medicines and food items for the flood affected people in Jammu and Kashmir. We were able to serve 19 villages and around 3392 people over a period of 25 days. We were able to spend full day at all camps, dispensing medicines and food materials to the affected victims. Our team consisted of 30 volunteers from all over India who were medical students, priests, nuns and health care volunteers. And we showed our true spirit of commitment and determination to work for the cause-help and serve people. There was not a day where we did not seek God's blessings and guidance. We thanked the Lord even during our journey through the villages.



## ► Record of Medical camps Conducted in Kashmir

Date	Name of the Village	Name of the Block	Number of patients
04th Oct 2014	Kisrigama	Kakapora	128
05th Oct 2014	Larve	Kakapora	39
05th Oct 2014	Qazigund	Kakapora	149
08th Oct 2014	Gulbugh	Kakapora	115
08th Oct 2014	Mohanviji	Kakapora	172
09th Oct 2014	Bandarpora	Kakapora	125
09th Oct 2014	Hanjipora	Kakapora	58
09th Oct 2014	Dangarpora	Tral	81
10th Oct 2014	Beighpora	Tral	210
11th Oct 2014	Kharbatpora	Kakapora	125
14th Oct 2014	Larkipora	Tral	210
15th Oct 2014	Puchalkullulu	Kakapora	195
16th Oct 2014	Kawani	Tral	235
17th Oct 2014	Bandina	Litter	270
18th Oct 2014	Kulpora	Litter	235
20th Oct 2014	Anghazipora	Tral	225
21st Oct 2014	Kahandipora	Tral	285
22nd Oct 2014	Sail Awantipora	Tral	277
23rd Oct 2014	Khellan	Litter	264
Total	19	3	3392



# St. Camillus Blood & Organ Donation Movement

## ► LifeDrops

Life Drops is a movement for those who are willing to donate blood. It connects willing blood donors to the needy patients at times of surgery, hospitalization, accidents & injuries. The LifeDrops program communicates with donors at the time of the request and facilitates getting them to the hospital for blood donation. The program uses social media and mobile devices to communicate with the donors and recipients. This year around 180 people benefited from this program especially the poor health compromised people.

### *New initiatives under Life Drops*

Under Life drops unit, Bangalore, Camillains have initiated a blood donation movement called 'Care 4 Life' in collaboration with St. Joseph's degree college, Bangalore to help the needy patients with blood requirement at St. Philomena's hospital, Bangalore. Students registered at the youth movements of the college are the prime blood donors. The program is executed through social network like Whatsapp where the need of blood is posted and noticing the same, the members would respond to the need.

## ► Life Beats

LifeBeats is a St. Camillus organ donation movement started in 2015. The objective is to create a database of willing donors who can be tapped at the time of need. While there are no accurate statistics, media reports usually quote doctors who estimate that 2,00,000 patients need kidney transplants in India every year and barely 4,000 to 6,000 actually get one. This campaign across India aimed at briefing communities, patients and hospitals about the need for kidney or other organ donations.





# Balance Sheet Financial

**LAWRENCE TELLIS & ASSOCIATES**  
**CHARTERED ACCOUNTANTS**

No.44/45, 2nd Floor  
"Vinayaka Complex"  
Off.Symphony Theatre  
Residency Cross Road  
Bangalore – 560 025  
INDIA  
Telephones : 080-41514791  
41514792/93  
Fax : 080-25583589  
Email: Itamirandaindia@gmail.com

## INDEPENDENT AUDITOR'S REPORT

### TO THE TRUSTEES OF SNEHA CHARITABLE TRUST

#### 1. Report on the Financial Statements -

We have audited the Consolidated Balance Sheet of "SNEHA CHARITABLE TRUST" Bangalore (a public Charitable Trust) as at 31st March 2015, the Consolidated Income and Expenditure Account and the Consolidated Receipts and Payments for the year ended on that date and a summary of significant accounting policies and other explanatory information related thereto.

#### 2. Management's Responsibility for the Financial Statements -

The Board of Trustees of the Trust are responsible for the preparation of these financial statements that give a true and fair view of the financial position and financial performance of the Trust in accordance with the accounting principles generally accepted in India, including the prescribed Accounting Standards, to the extent applicable. This responsibility includes the design, implementation and maintenance of internal controls relevant to the preparation and presentation of the financial statements that give a true and fair view and that are free from material mis-statements, whether due to fraud or error.

#### 3. Our Responsibility as Auditors of the Trust -

Our responsibility is to express an opinion on these financial statements based on our audit. We conducted our audit in accordance with the Standards on Auditing issued by the Institute of Chartered Accountants of India. Those Standards require that we comply with ethical requirements and plan and perform the audit to obtain reasonable assurances about whether the financial statements are free from material mis-statements.

An audit involves performing procedures to obtain audit evidence about the amounts and disclosures in the financial statements. The procedures selected depend on the auditor's judgment, including the assessment of the risks of material mis-statements of the financial statements, whether due to fraud or error. In making those risk assessments, the auditor considers internal controls relevant to the Trust's preparation and fair presentation of the financial statements in order to design audit procedures that are appropriate in the circumstances. An audit also includes evaluating the appropriateness of accounting policies used and the reasonableness of the accounting estimates made by the management, as well as evaluating the overall presentation of the financial statements. We believe that the audit evidence we have obtained is sufficient and appropriate to provide a basis for our audit opinion.



**LAWRENCE TELLIS & ASSOCIATES  
CHARTERED ACCOUNTANTS**

-- 2 --

**4 Our Opinion -**

On the basis of such checks of the extracts of the books and of the vouchers made available to us and as we considered appropriate and also on the basis of information and explanations given to us, during the course of our audit, we state that, in our opinion, the said financial statements give a true and fair view in uniformity with the accounting principles generally accepted in India : -

- a) In the case of the Consolidated Balance Sheet, of the state of affairs of the Trust as at March 31st, 2015;
- b) In the case of the Consolidated Income and Expenditure account, of the surplus arising as a result of its activities/ operations for the year ended on that date; and
- c) In the case of the Consolidated Receipts and Payment account, of the statement of receipts and payments and also of the opening and closing balances of cash and banks for the year ended on that date.

**5 Report on other Regulatory Requirements -**

Further to our comments in paragraphs 1) to 4) above, we report that :

- a) We have obtained all the information and explanations which, to the best of our knowledge and belief, were necessary for the purposes of our audit;
- b) In our opinion, proper books of account have been kept by the Trust in so far as appears from our examination of their books;
- c) The financial statements, viz., the Consolidated Balance Sheet, the Consolidated Income and Expenditure account and the Consolidated Receipts and Payments account referred to in this report are in agreement with the books of account of the Trust; and
- d) In our opinion, the said financial statements of the Trust comply with the prescribed accounting standards, to the extent applicable.

For LAWRENCE TELLIS & ASSOCIATES  
CHARTERED ACCOUNTANTS  
(FIRM REGISTRATION NO.001857S)

(ROHAN MIRANDA)  
PARTNER  
(ICAI M.NO. 022772)



PLACE : BANGALORE  
DATED : 31/08/2015

**LAWRENCE TELLIS & ASSOCIATES**  
Chartered Accountants  
No. 44/45, 2nd Floor, Vinayaka Complex  
Residency Cross Road, Bangalore - 560 025  
Ph.: 41514791/92/93  
(FIRM ICAI REGN. No. 001857S)

**SNEHA CHARITABLE TRUST**  
**UPASANA, P.B.NO 2913, DHARMARAM COLLEGE POST, BANGALORE - 560 029**  
**CONSOLIDATED BALANCE SHEET AS AT 31ST MARCH 2015**

	AMOUNT Rs.	AMOUNT Rs.
<b>CAPITAL FUNDS &amp; LIABILITIES :</b>		
<b>GENERAL FUND -</b>		
As per last Balance Sheet	60218264	
<b>ADD :</b> Opening Bank Balance as on 01/04/2014 of Snehatheeram trust local account brought to books by crediting General Fund	6445	
	60224709	
<b>ADD :</b> Excess of Income over Expenditure for the year transferred from Income & Expenditure Account	16987787	77212496
<b>CORPUS DONATION FUND</b>		
<b>TRUST FUND</b>		
Corpus gift received from the Settlor (O.B)		1000
<b>ADVANCE FROM A BENEFACTOR (O.B)</b>		45000
Advance received for disbursement -Karnataka State AIDS Prevention Society (O.B)	197294	
<b>LESS :</b> Transferred to Grant received from KSAPS account	197294	-
Advance received for sale of land	135000	
<b>LESS :</b> Repaid during the year	35000	100000
Loan availed from South Indian Bank Ltd	1970000	
<b>LESS :</b> Loan repaid during the year	1970000	-
<b>OTHER LIABILITIES</b>		
Employees Provident Fund collected (to be remitted)		116894
<b>TOTAL</b>		<b>77475390</b>
<b>PROPERTIES &amp; ASSETS</b>		
Fixed Assets - As per Schedule 'A'		60301177
<b>FIXED DEPOSITS WITH BANK</b>		
As per last Balance Sheet	8311332	
<b>ADD :</b> Invested during the year	12759462	
	21070794	
<b>LESS :</b> Matured during the year (principal value)	11893366	9177428
<b>DEPOSITS/ADVANCES</b>		
Gas deposit -(O.B)		20600
Telephone deposit -(O.B)		540
Electricity Deposits -(O.B)		25190
Advance given for purchase of land (O.B)		100000
Advance towards purchase of Printing Machine - during the year		500000
TDS remitted on Interest and other income (O.B)	62915	
<b>ADD :</b> TDS remitted during the year	14630	
	77545	
<b>LESS :</b> Refund received during the year	14173	63372
<b>BALANCES OF CASH/BANK :</b>		
Cash on hand	446681	
Balances with Banks	6840402	7287083
<b>TOTAL</b>		<b>77475390</b>

Schedule 'A' and Schedule 'B' (Notes to the accounts) annexed hereto form an integral part of this Consolidated Balance Sheet.



PLACE : BANGALORE  
DATED : 31/08/2015

For SNEHA CHARITABLE TRUST

*Fr. Bijoy K George*  
**Fr. BIJOY K GEORGE**  
(TREASURER)

Vide our audit report of even date

For LAWRENCE TELLIS & ASSOCIATES  
CHARTERED ACCOUNTANTS  
(FIRM REGISTRATION NO. 001857S)

*(Signature)*  
**(ROHAN MIRANDA)**  
PARTNER  
(ICAI M.No. 022772)





**SNEHA CHARITABLE TRUST**  
**UPASANA, P.B.NO.2913, DHARMARAM COLLEGE POST, BANGALORE - 560 029**  
**CONSOLIDATED INCOME AND EXPENDITURE ACCOUNT FOR THE**  
**YEAR ENDED 31ST MARCH 2015**

	AMOUNT Rs.	AMOUNT Rs.
<b>INCOME:</b>		
Voluntary Contributions		25390017
Donations		18539828
<b>Bank Interest-</b>		
-Savings Bank A/c	277676	
-Fixed deposits	<u>1271413</u>	1549089
Entry fees for Champion-in-me-Marathon Run		100000
<b>Grant received from -</b>		
- National Rural Health Mission		179216
Contribution from District Project Management Office, Kolar		184000
Income/Receipts from sale of Candles		492955
Interest on Income Tax refund		1477
Farm/Garden Income		10000
Lab Income		110020
Grant from Karnataka State AIDS Prevention Society		197294
<b>Gain on sale of Vehicle</b>	166500	
Sale proceeds from sale of Vehicle	<u>95073</u>	71427
<b>LESS : WDV of Vehicle sold</b>		
<b>TOTAL</b>		<u><u>46825323</u></u>
<b>EXPENDITURE :</b>		
Salaries & Wages		116500
Provident Fund remitted		282717
<b>Relief/Rehabilitation of victims of natural calamities</b>		
-House Building Assistance		2708460
-Medical Relief Expenses		1100
-Travelling & Conveyance		848860
-Printing & Stationery		131749
-Petrol, Diesel & Lubricants		21110
-Postage & Telephone		3441
<b>-Repairs &amp; Maintenance -</b>		
-Computer	3550	
-Electrical Equipments & Fittings	<u>2889</u>	6439
-Website designing Charges		30000
-Accommodation Charges		123000
-Food & Provision		107901
-Bank Charges		2453
-Clothing and Footwear		69651
-Salaries & Wages		132000
-Training Programme Expenses		<u>23000</u>
c/fd		4608381

CONSOLIDATED I & E A/C (PAGE 1) CONTD.....





**SNEHA CHARITABLE TRUST**  
**UPASANA, P.B.NO.2913, DHARMARAM COLLEGE POST, BANGALORE - 560 029**  
**CONSOLIDATED INCOME AND EXPENDITURE ACCOUNT FOR THE YEAR ENDED**  
**31ST MARCH 2015 (CONTD.....)**

	AMOUNT Rs.
b/fd	25917426
-Passport & Visa charges	26360
-Training Programme Expenses	338085
-Candle making Expenses	231562
-Bank Charges	12182
-Postage & Telephone	312272
-Disposals	4666
-Website Charges	12750
-Farm/Garden Expenses	366854
-Honorarium paid	442000
-Funeral Expenses	2350
-Photos, Cassettes, CD's & Films	960
-Return of grant to Karnataka State Aids Prevention Society (KSAPS)	37042
<u>Other Expenses</u>	61242
-Interest on loan taken from South Indian Bank Ltd	151799
-Legal & Professional Charges	864
-Bank Charges	98
-Interest on delayed payment of TDS	65000
-Website designing Charges	47680
-TDS late filing Fees	8212
-Rates & Taxes	
Depreciation as per Schedule 'A'	1798132
Excess of Income over Expenditure for the year transferred to General Fund Account	16987787
<b>TOTAL</b>	<b>46825323</b>

Schedule 'A' and Schedule 'B' (Notes to the accounts) annexed hereto form an integral part of this Consolidated Income & Expenditure Account.

Vide our audit report of even date

For LAWRENCE TELLIS & ASSOCIATES  
 CHARTERED ACCOUNTANTS  
 (FIRM REGISTRATION NO. 001857S)

For SNEHA CHARITABLE TRUST

PLACE : BANGALORE  
 DATED : 31/08/2015

Fr. BIJOY K GEORGE  
 (TREASURER)

(ROHAN MIRANDA)  
 PARTNER  
 (ICAI M.No. 022772)



END OF CONSOLIDATED I & E A/C (PAGE 3)



**LAWRENCE TELLIS & ASSOCIATES**  
 Chartered Accountants  
 No. 44/45, 2nd Floor, Vinayaka Complex  
 Residency Cross Road, Bangalore - 560 025  
 Ph.: 41514791/92/93  
 (FIRM ICAI REGN. No. 001857S)

**SNEHA CHARITABLE TRUST**  
**UPASANA, P.B.NO.2913, DHARMARAM COLLEGE POST, BANGALORE - 560 029**  
**CONSOLIDATED RECEIPTS AND PAYMENTS ACCOUNT FOR THE YEAR ENDED 31ST MARCH 2015**

PARTICULARS	Rs.	Rs.	Rs.	Rs.	Rs.	Rs.	Rs.	Rs.	Rs.	Rs.	Rs.
	Rs.	Rs.	Rs.	Rs.	Rs.	Rs.	Rs.	Rs.	Rs.	Rs.	Rs.
<b>OPENING BALANCES OF CASH/BANK:</b>											
Cash on hand	1046384	833	10760	2095	5515	6484	3628	21266	7213	-	1104178
Balances with Banks	5376243	139752	42289	1080	43306	393473	280701	17001	467935	3456	6765236
Cheque in transit to Main Local Account	248022	-	-	-	-	-	-	-	-	-	248022
<b>RECEIPTS DURING THE YEAR:</b>											
<b>Voluntary Contributions</b>											
Donations	25390017	-	724600	1296875	6169661	3608436	-	843298	2348712	2955000	18539828
<b>Bank Interest:</b>											
-Savings Bank A/c	188086	8308	3434	8524	10093	15509	12708	1315	18115	11584	277676
-Fixed deposits	1167148	46542	-	-	-	38168	-	-	-	19554	1271413
Entry fees for Champion-in-me-Marathon Run	-	-	-	-	-	100000	-	-	-	-	100000
<b>Grant received from:-</b>											
- National Rural Health Mission	-	-	-	-	-	-	179216	-	-	-	179216
Fixed deposits - Maturity proceeds	11393366	-	-	-	-	500000	-	-	-	-	11893366
Employees Contribution to Provident Fund	-	-	-	-	55640	94334	-	-	-	-	149974
Contribution from District Project Management Office, Kolar	-	184000	-	-	-	-	-	-	-	-	184000
Income/Receipts from sale of Candles	-	-	-	-	492955	-	-	-	-	-	492955
Interest on Income Tax refund	-	1477	-	-	-	-	-	-	-	-	1477
Farm/Garden Income	-	-	-	-	10000	-	-	-	-	-	10000
Lab Income	-	-	-	-	110020	-	-	-	-	-	110020
Sale proceeds from sale of Vehicle	-	-	-	-	-	-	-	-	-	-	166500
Income Tax refund received	-	14173	-	-	-	-	-	-	166500	-	14173
<b>Intra-unit Transfers as per Central C)</b>											
-Camillian Task Force Account	-	-	100000	-	-	-	-	-	-	-	100000
-Snehatheream Local Account	-	1479	-	-	-	-	-	-	-	-	1479
-Citizen Help Desk, Kolar - Local	-	355951	-	-	-	-	-	-	-	-	355951
<b>TOTAL</b>	<b>44809267</b>	<b>1345761</b>	<b>881083</b>	<b>1308574</b>	<b>6897190</b>	<b>4756404</b>	<b>476253</b>	<b>882880</b>	<b>3008475</b>	<b>2989594</b>	<b>67355481</b>

CONSOLIDATED R & P A/C (PAGE 1) CONTD.....



UPASANA P.B.NO.2913, DHARMARAM COLLEGE POST, BANGALORE - 560 023  
CONSOLIDATED RECEIPTS AND PAYMENTS ACCOUNT FOR THE YEAR ENDED 31ST MARCH 2015 (CONTD....)

PARTICULARS	Rs.										Rs.	
	Foreign Contribution Account (Annexure - I)	Bangalore Main Local Account	Snehatharam Kerala Local Account (Annexure - II)	Snehagiri Bangalore Local Account (Annexure - III)	Snehadevi Bangalore Local Account (Annexure - IV)	Home Bangalore Local Account	Help Desk Kolar Local Account	Citizen Snehadevi Local Account	Sneha Kiran Secunderabad Local Account	Camillian Task Force (CTF) Local Account	Rs.	Rs.
<b>PAYMENTS DURING THE YEAR :</b>												
Fixed Deposits Invested in Banks	9353366	845542	-	-	-	-	-	-	-	2519554	12759462	
Tax deducted at source remitted	-	3680	-	-	-	-	-	-	-	-	14630	
Salaries & Wages	-	-	-	-	-	-	116500	-	-	-	116500	
Provident Fund remitted	-	-	-	-	315797	-	-	-	-	-	315797	
<b>Relief/Rehabilitation of victims of natural calamities</b>												
-Telephone instrument purchased	1200	-	-	-	-	-	-	-	-	-	1200	
-Camera purchased	3490	-	-	-	-	-	-	-	-	-	3490	
-Printer purchased	12215	-	-	-	-	-	-	-	-	-	12215	
-Computer & Accessories Purchased	97894	-	-	-	-	-	-	-	-	-	97894	
-House Building Assistance	2708460	-	-	-	-	-	-	-	-	-	2708460	
-Medical Relief Expenses	832	-	-	-	-	-	-	-	-	268	1100	
-Travelling & Conveyance	848860	-	-	-	-	-	-	-	-	-	848860	
-Printing & Stationery	131749	-	-	-	-	-	-	-	-	-	131749	
-Petrol, Diesel & Lubricants	18810	-	-	-	-	-	-	-	-	-	21110	
-Postage & Telephone	3441	-	-	-	-	-	-	-	-	-	3441	
-Repairs & Maintenance - Computer	3550	-	-	-	-	-	-	-	-	-	3550	
-Electrical Equipments & Fittings	2889	-	-	-	-	-	-	-	-	-	2889	
-Website designing Charges	30000	-	-	-	-	-	-	-	-	-	30000	
-Accommodation Charges	123000	-	-	-	-	-	-	-	-	-	123000	
-Food & Provision	102850	-	-	-	-	-	-	-	-	5251	107901	
-Bank Charges	1669	-	-	-	-	-	-	-	-	784	2453	
-Clothing and Footwear	69651	-	-	-	-	-	-	-	-	-	69651	
-Salaries & Wages	132000	-	-	-	-	-	-	-	-	-	132000	
-Training Programme Expenses	-	-	-	-	-	-	-	-	-	23000	23000	
<b>Treatment &amp; Rehabilitation of persons affected by AIDS :</b>												
-Land & Land development	110000	-	-	-	-	-	-	-	-	-	110000	
-Construction of Boys home at Krishnagiri	1251212	-	-	-	-	-	-	-	-	-	1251212	
-Construction of Church at Krishnagiri	2842409	-	-	-	-	-	-	-	-	-	2842409	
-Construction of Girls Hostel at Krishnagiri	1387039	-	-	-	-	-	-	-	-	-	1387039	
-Construction of Meeting Hall at Krishnagiri	398327	-	-	-	-	-	-	-	-	-	398327	
-Construction of School Building at Krishnagiri	6202918	-	-	-	-	-	-	-	-	-	6202918	
-Construction of Camillus Home at Yellampet - WIP	201580	-	-	-	-	-	-	-	-	-	201580	
-Renovation of Aids Centre Building at Alwaye - WIP	685628	-	-	-	-	-	-	-	-	-	685628	
-Electrical Equipments & Fittings purchased	121799	-	-	-	-	-	-	-	-	5150	126949	
-Air Conditioner purchased	44000	-	-	-	-	-	-	-	-	-	44000	
-Printer purchased	9750	-	-	-	-	-	-	-	-	-	9750	
-Computer & Accessories purchased	-	-	-	-	-	-	-	-	-	-	-	
-CCTV System Installed	54901	-	41550	-	-	-	-	-	-	13575	135811	
	26995269	850222	41550	122236	323535	48000	116500	-	-	18725	2551157	31070426

CONSOLIDATED R & P A/C (PAGE 2) CONTD.....



*Signature*

c/d



**SNEHA CHARITABLE TRUST**  
**UPASANA P.B.NO.2913, DHARMARAM COLLEGE POST, BANGALORE - 560 029**  
**CONSOLIDATED RECEIPTS AND PAYMENTS ACCOUNT FOR THE YEAR ENDED 31ST MARCH 2015 (CONTD....)**

PARTICULARS	Foreign Contribution		Bangalore Main Local		Sneha Gram		Sneha Care		Citizen		Sneha Kiran		Snehasadan		Camillian	
	Rs.	Rs.	Rs.	Rs.	Rs.	Rs.	Rs.	Rs.	Rs.	Rs.	Rs.	Rs.	Rs.	Rs.	Rs.	Rs.
	26995289	850222	41550	122236	323535	51212	116500	-	18725	2551157	31070426					
b/fd	643372	-	-	-	-	88300	-	-	15480	-	747152					
-Furniture & Fixtures purchased	20000	-	-	-	-	74001	-	-	-	-	20000					
-Domestic Equipments purchased	-	-	-	-	-	-	-	-	-	-	74001					
-Medical Equipment purchased	161775	-	-	-	-	-	-	-	-	-	161775					
-Borewell & Pumpset	1600	-	-	-	1399	-	-	-	-	-	16700					
-Telephone Instruments purchased	-	-	-	-	-	-	-	-	-	-	405126					
-Vehicle purchased	541835	-	-	-	-	-	-	-	-	-	541835					
-Solar Lighting System purchased	8499	-	-	51000	-	-	-	-	-	-	59499					
-Sound System purchased	-	-	-	33378	-	-	-	-	-	-	33378					
-Television set purchased	54376	-	-	-	-	-	-	-	-	-	54376					
-Pumpset purchased	6650	-	-	-	-	-	-	-	-	-	6650					
-Sewing Machine purchased	-	-	-	-	281699	-	-	-	-	-	281699					
-Physiotherapy Equipments purchased	8500	-	-	-	-	-	-	-	-	-	8500					
-Water purifier system purchased	17600	-	-	-	23000	-	-	-	-	-	40600					
-Washing machine purchased	55915	-	-	-	-	-	-	-	-	-	55915					
-Xerox machine purchased	65814	-	-	-	-	-	-	-	-	-	65814					
-Drip Irrigation Facility Installed	20000	-	-	-	-	-	-	-	-	-	20000					
-Livestock purchased	500000	-	-	-	-	-	-	-	-	-	500000					
-Advance towards Printing Machine	35000	-	-	-	-	-	-	-	-	-	35000					
-Refund of advance earlier received for land	58260	-	-	-	-	1000	-	-	-	-	85827					
-Educational Expenses	196887	-	4316	20075	35099	89331	-	-	-	-	374415					
-Bedding, Clothing & Footwear	254524	-	4820	-	285370	24150	-	-	-	-	729719					
-Electricity & Water Charges	1627765	-	130730	-	1859035	1313081	-	-	-	-	5680912					
-Food & Accommodation	-	-	-	-	-	-	-	-	-	-	-					
c/fd	32743372	853822	256828	233343	3045198	1937732	116500	231730	1363923	2551157	43333505					

CONSOLIDATED R &amp; P A/C (PAGE 3) CONTD.....



**SNEHA CHARITABLE TRUST**  
UPASANA, P.B.NO.2913, DHARMARAM COLLEGE POST, BANGALORE - 560 028  
CONSOLIDATED RECEIPTS AND PAYMENTS ACCOUNT FOR THE YEAR ENDED 31ST MARCH 2015 (CONTD.....)

PARTICULARS										
	Foreign Contribution Account (Annexure - I)	Bangalore Main Local Account (Annexure - I)	Snehatheeram Kerala Local Account (Annexure - II)	Sneha Gram Krishnagiri Local Account (Annexure - II)	Snehadaan Bangalore Local Account (Annexure - III)	Sneha Care Home Bangalore Local Account (Annexure - III)	Citizen Help Desk Kolar Local Account (Annexure IV)	Sneha Kiran Secundarabad Local Account (Annexure IV)	Camillian Task Force (CTF) Local Account	
	Rs.	Rs.	Rs.	Rs.	Rs.	Rs.	Rs.	Rs.	Rs.	Rs.
b/d	32743372	853822	256828	233343	3045198	1937732	116500	231730	1363923	2551157
-Household Maintenance	102259	-	1390	-	36009	47010	-	2010	44373	-
-Laundry & Toiletries	39970	-	300	-	65985	72881	-	7750	21192	-
-Medical Expenses	549289	-	28881	-	559192	281486	-	333953	151098	-
-Newspaper & Periodicals	6205	-	1875	-	7524	1690	-	-	6516	-
-Printing & Stationery	161571	-	13450	-	74214	86413	-	3506	33518	-
-Salaries & Wages	2682601	192600	224580	-	1345939	1321745	-	166000	590000	-
-Children maintenance	3550	-	-	16686	-	-	-	-	-	20236
-Bio-Medical waste management	-	-	-	-	-	-	-	-	-	17562
-Staff Welfare Expenses	5000	-	-	-	17000	9125	-	-	-	31125
-Advertisement Expenses	-	-	-	-	-	25000	-	-	-	25000
-Interest on delayed payment of TDS	8814	-	-	-	-	289	-	-	-	9103
-TDS paid on behalf of suppliers irrecoverable written off	35065	-	-	-	-	-	-	-	-	35065
-Functions & Celebrations	17000	-	-	-	-	-	-	-	-	36710
-Travelling & Conveyance	160996	-	2250	-	7460	10000	-	-	-	310603
-Legal & Professional Charges	-	50000	9053	-	57346	26802	-	10018	46288	-
-Sports & Recreational Expenses	48729	-	7872	-	14000	-	-	-	-	64000
-Petrol, Diesel & Lubricants	548347	-	29835	-	25410	158247	-	4760	28025	273043
-Gas & Fuel	131931	-	3400	-	177347	87716	-	39581	102074	984900
-Gifts & Incentives	6631	-	135	-	224211	115630	-	52592	94306	622170
-Administrative Expenses	82550	-	-	-	-	-	-	-	14604	21370
-Charity and Donations	1750	-	14590	-	-	-	-	-	-	82550
-Priests' Maintenance	-	-	-	-	23700	-	-	-	10000	50040
-Rates, Taxes & Insurance	-	-	-	-	4170	-	-	-	-	4170
-Doctors' Consultation Charges	18000	-	-	-	-	-	-	-	1245	1245
-Surgical Disposables	9193	-	-	-	-	2000	-	-	23500	43500
-Ground levelling Charges	177425	-	-	-	-	-	-	-	-	9193
-Passport & Visa charges	26360	-	-	-	-	-	-	-	-	279025
-Training Programme Expenses	338085	-	-	-	-	-	-	-	101600	-
-Candle making Expenses	86371	-	-	-	145191	-	-	-	-	-
-Bank Charges	5079	375	2180	-	2325	1483	-	56	674	231562
-Postage & Telephone	126102	-	6069	-	86256	49444	-	5211	39190	12182
-Disposals	-	-	4666	-	-	-	-	-	-	312272
-Website Charges	-	-	-	-	-	12750	-	-	-	4666
-Farm/Garden Expenses	348082	-	-	-	8100	-	-	-	-	12750
-Honarium paid	285000	-	-	-	129500	27500	-	-	10672	366854
c/d	38755327	1096797	607354	250029	6056077	4274853	116500	857267	2700360	2551157
										57285721





UPASANA, P.B.NO.2913, DHARMARAM COLLEGE POST, BANGALORE - 560 029  
CONSOLIDATED RECEIPTS AND PAYMENTS ACCOUNT FOR THE YEAR ENDED 31ST MARCH 2015 (CONTD.....)

PARTICULARS	Rs.	Rs.	Rs.	Rs.	Rs.	Rs.	Rs.	Rs.	Rs.	Rs.	Rs.
	Foreign Contribution Account (Annexure - I)	Bangalore Main Local Account	Snehatheeram Kerala Local Account (Annexure - II)	Sneha Gram Krishnangiri Local Account	Snehadaan Bangalore Local Account (Annexure - III)	Sneha Care Home Bangalore Local Account	Citizen Help Desk Kolar Local Account	Sneha Kiran Secunderbad Local Account	Snehasadan Mangalore Local Account (Annexure IV)	Camillian Task Force (CTF) Local Account	Rs.
b/fd	38755327	1086797	607354	250029	6056077	4274853	116500	857267	2700360	2551157	57265721
-Funeral Expenses	-	-	2350	-	-	-	-	-	-	-	2350
-Photos, Cassettes, CD's & Films	500	-	-	-	460	-	-	-	-	-	960
-Return of grant to Karnataka State Aids Prevention Society (KSAPS)	-	-	-	-	37042	-	-	-	-	-	37042
<b>Other Expenses</b>											
-Loan repaid to South Indian Bank Ltd	1970000	-	-	-	-	-	-	-	-	-	1970000
-Interest on loan taken from South Indian Bank Ltd	61242	-	-	-	-	-	-	-	-	-	61242
-Legal & Professional Charges	151799	-	-	-	-	-	174	-	-	-	151799
-Bank Charges	690	-	-	-	-	-	-	-	-	-	690
-Interest on delayed payment of TDS	98	-	-	-	-	-	-	-	-	-	98
-Website designing Charges	65000	-	-	-	-	-	-	-	-	-	65000
-TDS late filing Fees	47680	-	-	-	-	-	-	-	-	-	47680
-Rates & Taxes	8212	-	-	-	-	-	-	-	-	-	8212
<b>Intra-unit Transfers as per Central C)</b>											
-Main Local Account	-	-	1479	-	-	-	355951	-	-	-	357430
-Namma Snehatheeram, Kerala Local Account	-	-	-	-	-	-	-	-	-	100000	100000
<b>CLOSING BALANCES OF CASH/BANK:</b>											
Cash on hand	112199	2312	41836	43066	22276	633	3528	18756	7794	194181	446681
Balances with Banks	3636520	246652	228064	1015479	781335	480918	-	6857	300321	144256	6840402
<b>TOTAL</b>	<b>44809267</b>	<b>1345761</b>	<b>881083</b>	<b>1308574</b>	<b>6897190</b>	<b>4756404</b>	<b>476253</b>	<b>882880</b>	<b>3008475</b>	<b>2989594</b>	<b>6735548</b>

Note : Annexures I to IV annexed hereto form an integral part of this Consolidated Receipts and Payments account.

Vide our audit report of even date

For LAWRENCE TELLIS & ASSOCIATES  
CHARTERED ACCOUNTANTS  
(FIRM REGISTRATION NO. 001857S)

For SNEHA CHARITABLE TRUST

*Signature*  
FR. BILJOY K GEORGE  
(TREASURER)

PLACE : BANGALORE  
DATED : 31/08/2015



END OF CONSOLIDATED R & P A/C (PAGE 5)

**LAWRENCE TELLIS & ASSOCIATES**  
Chartered Accountants  
No. 44/45, 2nd Floor, Vinayaka Complex  
Residency Cross Road, Bangalore - 560 025  
Ph.: 41514791/92/93  
(FIRM ICAI REGN No. 001857S)



BANGALORE MAIN, MANATHYADI, CAMILLUS HOME YELLAMPET, SNEHAKIRAN ELLURU, SNEHADAN BANGALORE, SNEHASADAN MANGALORE, JYOTHI DASHAN NAGPUR, SNEHAGRAM KRISHNAGIRI, SNEHATHEERAM ERNAKULAM, SNEHATHEERAM SECUNDERBAD, CAMILLIAN TASK FORCE - FC ACCOUNTS

SUB-CONSOLIDATED RECEIPTS AND PAYMENTS ACCOUNT FOR THE YEAR ENDED 31ST MARCH 2015

PARTICULARS	BANGALORE MAIN F.C. ACCOUNT	MANATHWADI ACCOUNT	CAMILLUS HOME YELLAMPET HYDERABAD ACCOUNT	SNEHA KIRAN ELLURU ACCOUNT	SNEHADAN BANGALORE ACCOUNT	SNEHA SADAN MANGALORE ACCOUNT	JYOTHI DARSHAN NAGPUR ACCOUNT	SNEHA GRAMI KRISHNAGIRI ACCOUNT	SNEHA - THEERAM ERNAKULAM KERALA	SNEHA CARE HOME BANGALORE	SNEHA KIRAN SECUNDERBAD ACCOUNT	CAMILLIAN TASK FORCE (CITF)	GRAND TOTAL
	Rs.	Rs.	Rs.	Rs.	Rs.	Rs.	Rs.	Rs.	Rs.	Rs.	Rs.	Rs.	Rs.
OPENING BALANCES OF CASH/													
BANK INVESTMENTS :													
Cash on hand	8443	202	6851	-	8155	720	3036	59422	63256	30318	32366	834586	1046384
Balances with Banks	4374206	6016	74830	1634	163821	16991	1678	97953	2755	2855	23058	610446	5376243
Cheque in transit to Snehasadan, Mangalore	248022	-	-	-	-	-	-	-	-	-	-	-	248022
RECEIPTS DURING THE YEAR													
Voluntary Contributions	25350017	-	-	-	-	-	-	-	-	10000	-	-	25350017
Bank Interest	140733	240	9827	66	5105	4768	73	5812	1506	3073	3155	13728	186066
-Savings Bank Account	1167149	-	-	-	-	-	-	-	-	-	-	-	1167149
-Fixed Deposits	11381975	-	-	-	-	-	11391	-	-	-	-	-	11393366
Fixed deposits - Maturity proceeds	-	-	-	-	-	-	-	-	-	-	-	-	-
Transfers as per Contra (C)	-	-	2452000	-	1491140	860234	-	1712822	1800000	929669	1023703	2890000	28569828
- Bangalore Main F.C. A/c	1660	-	-	-	-	-	-	-	-	-	-	-	1660
- Snehakiran, Eluru	16178	-	-	-	-	-	-	-	-	-	-	-	16178
- Jyothi Darshan, Nagpur	-	-	-	-	-	-	-	-	-	-	-	-	-
TOTAL	42718393	6458	2543508	1700	1698221	882722	16178	17285009	1807517	975915	1082302	4348760	73398733

**PAYMENTS DURING THE YEAR**

**40. Rehabilitation of Victims**

**of natural calamities**

**-Telephone instrument purchased**

**-Printer purchased**

**-Computer & Accessories purchased**

**-House Building Assistance**

**-Medical Relief Expenses**

**-Traveling & Conveyance**

**-Printing & Stationery**

**-Petrol, Diesel & Lubricants**

**-Postage & Telephone**

**-Repairs & Maintenance**

**-Computer**

**-Electrical Equipments & Fittings**

**-Website designing Charges**

**-Accommodation Charges**

**-Food & Provision**

**-Bank Charges**

**-Clothing and Footwear**

**-Salaries & Wages**



*[Signature]*

ANN-I-SUB-CONSOLIDATED R&P A/C (PAGE 1) CONTD.....



**ANNEXURE - I (CONTD.)**

BANGALORE MAIN, MANATHAWADI, CAMILLUS HOME YELLAMPET, SNEHAKRAN ELLURU, SNEHAADAN BANGALORE, JYOTHI DARSHAN NAGPUR, SNEHAGRAM  
SRIKONDA, SNEHATHEERAM ERNAKULAM, SNEHA CARE HOME BANGALORE, SNEHAKRAN SECUNDERBAD,CAMILLIAN TASK FORCE - FC ACCOUNTS  
BIRJHARCONSLATED RECEIPTS AND PAYMENTS ACCOUNT FOR THE YEAR ENDED 31ST MARCH 2015

PARTICULARS	BANGALORE MAIN F.C.	MANATHWADI ACCOUNT	CAMILLIAN HOME YELLOWABAD HYDERABAD	SNEHA KIRAN ELLURU ACCOUNT	SNEHADAMN BANGALORE ACCOUNT	JYOTHI DARSHAN NAGPUR ACCOUNT	SNEHA GRAAM KRISHNAGIRI ACCOUNT	SNEHA - THEERAM ERNAKULAM KERALA	SNEHA CARE HOME BANGALORE	SNEHA KIRAN SECUNDERBAD ACCOUNT	CAMILLIAN TASK FORCE (CTF)	GRAND TOTAL
	Rs.	Rs.	Rs.	Rs.	Rs.	Rs.	Rs.	Rs.	Rs.	Rs.	Rs.	Rs.
48. Awareness about Acquired Immune Deficiency Syndrome (AIDS)/Treatment and rehabilitation of persons affected by AIDS	bfd	-	-	-	-	-	-	-	-	-	4292360	4292360
-Land & Land development	-	-	-	-	-	-	-	-	-	-	-	110000
-Construction of Boys Home, Krishnagiri	-	-	-	-	-	-	1251212	-	-	-	-	1251212
-Construction of Church, Krishnagiri	-	-	-	-	-	-	2842409	-	-	-	-	2842409
-Construction of Girls Hostel, Krishnagiri	-	-	-	-	-	-	1387039	-	-	-	-	1387039
-Construction of Meeting Hall, Krishnagiri	-	-	-	-	-	-	398327	-	-	-	-	398327
-Construction of School Building, Krishnagiri	-	-	-	-	-	-	6202918	-	-	-	-	6202918
-Construction of Camillus Home, Yellampet	-	-	-	-	-	-	-	-	-	-	-	201580
-Renovation of Aids Centre Building, Always - Wip	-	-	-	-	-	-	-	685428	-	-	-	685428
-Borewell & Pumpsset	-	-	-	-	40000	-	107425	2500	-	-	-	161775
-Electrical Equipments & Fittings purchased	-	-	-	-	-	-	74799	-	-	-	-	121799
-Air Conditioner purchased	-	-	-	-	-	-	-	-	-	-	-	44000
-CCTV System Installed	-	-	-	-	54601	-	20000	-	-	-	-	54601
-Domestic Equipments purchased	-	-	-	-	-	-	549657	-	-	-	-	549657
-Furniture & Fixtures purchased	-	-	-	-	93715	-	-	-	-	-	-	93715
-Telephone Instrument purchased	-	-	-	-	-	-	-	1600	-	-	-	1600
-Sewing Machine purchased	-	-	-	-	-	-	-	-	-	-	-	6650
-Sound system purchased	-	-	-	-	-	-	-	-	-	-	-	8499
-Washing machine purchased	-	-	-	-	-	-	-	-	-	-	-	17600
-Pumpsset purchased	-	-	-	-	-	-	-	-	-	-	-	17600
-Printer purchased	-	-	-	-	-	-	17962	-	-	-	-	17962
-Drip Irrigation System	-	-	-	-	-	-	-	-	-	-	-	9750
-Livestock purchased	-	-	-	-	-	-	65814	-	-	-	-	65814
-Water Purifier System purchased	-	-	-	-	-	-	20000	-	-	-	-	20000
-Xerox Machine purchased	-	-	-	-	-	-	8500	-	-	-	-	8500
-Solar Lighting System purchased	-	-	-	-	-	-	55915	-	-	-	-	55915
-Fixed deposit invested with Banks	-	-	-	-	-	-	541635	-	-	-	-	541635
-Advance towards Printing machine	-	-	-	-	-	-	-	-	-	-	-	9363366
-Refund of advance earlier received for sale of land	-	-	-	-	-	-	-	-	-	-	-	500000
-Bedding, Clothing & Footwear	-	-	-	-	1539	-	35000	-	13012	300	-	196937
-Educational Expenses	-	-	-	-	-	-	166991	6347	-	-	-	58260
-Electricity & Water Charges	-	-	-	-	12831	-	45429	-	-	-	-	254624
-Food & Provisions	-	-	-	-	36257	-	21540	-	80700	-	-	1627785
-Repairs & Maintenance -	-	-	-	-	110788	-	797686	295398	120963	164671	-	323425
-Vehicle	-	-	-	-	-	-	-	-	-	-	-	882493
-Building	-	-	-	-	19650	-	184792	87444	-	12208	-	27878
-Borewell	-	-	-	-	112000	-	100237	102800	300170	4055	-	5145
-Generator	-	-	-	-	-	-	15100	-	-	-	-	3984
-Computer	-	-	-	-	-	-	3815	1330	-	-	-	37200
-Electrical Equipments & Fittings	-	-	-	-	-	-	3984	-	-	-	-	219486
	-	-	-	-	108944	-	77012	23278	-	-	-	4292360
	-	-	-	-	439178	-	15053172	1231615	523344	271573	-	3274337



ANNUAL SUBSIDIARIES R &amp; P A/C (PAGE 2) CONTD...





SNEHA CHARITABLE TRUST

SESSINGA P.B. NO.2013, DRAMMARSEN COLLEGE POST, BANGALORE - 550 029  
MINIEMURIE 1600000

ANNEXURE - I (CONTD.....)

BANGALORE MAIN, MANATHWADI, CAMILLUS HOME YELLAMPET, SNEHAKIRAN ELLURU, SNEHASADAN BANGALORE, JYOTHI DARSHAN NAGPUR, SNEHAGRAM KRISHNAGIRI, SNEHATHEERAM ERNAKULAM, SNEHA  
BANGALORE, SNEHAKIRAN SECUNDERABAD, CAMILLIAN TASK FORCE- FG ACCOUNTS

**SUB-CONSOLIDATED RECEIPTS AND PAYMENTS ACCOUNT FOR THE YEAR ENDED 31ST MARCH 2015**

MANH-I-SUB-CONSOLIDATED R&amp;P A/C (PAGE 3) CONTD.....



SNEHA CHARITABLE TRUST UPASANA P.B. NO.2913, DHARMARAM COLLEGE POST, BANGALORE - 560 025 ANNEXURE - I (CONTD.) BANGALORE MAIN, MANATHWADI, CAMILLUS HOME YELLAMPET, SNEHAKIRAN ELLURU, SNEHADAN BANGALORE, SNEHATHIRAM ERNAKULAM, SN. BANGALORE, SNEHAKIRAN SECUNDERBAD, CAMILLIAN TASK FORCE - FC ACCOUNTS SUB-CONSOLIDATED RECEIPTS AND PAYMENTS ACCOUNT FOR THE YEAR ENDED 31ST MARCH 2015													
PARTICULARS	BANGALORE MAIN F.C.	MANATHWADI ACCOUNT	CAMILLUS HYDERABAD	SNEHA KIRAN ELLURU	SNEHADAN BANGALORE	SNEHA KIRAN BANGALORE	SNEHA KIRAN BANGALORE	JYOTHI DARSHAN NAGPUR	SNEHA GROOM KIRAN	SNEHA KIRAN ERNAKULAM	SNEHA KIRAN BANGALORE	SNEHA KIRAN BANGALORE	TOTAL
	Rs.	Rs.	Rs.	Rs.	Rs.	Rs.	Rs.	Rs.	Rs.	Rs.	Rs.	Rs.	Rs.
b/fd	9563366	-	2101407	-	1685102	581780	-	1709023	1746103	944820	1072858	4292360	38755827
55. Establishment Expenses													
51. Other Expenses													
- Loan repaid to South Indian Bank Ltd	1970000	-	-	-	-	-	-	-	-	-	-	-	1970000
- Interest on loan taken from South Indian Bank Ltd	61242	-	-	-	-	-	-	-	-	-	-	-	61242
- Legal & Professional Charges	151799	-	-	-	-	-	-	-	-	-	-	-	151799
- Bank Charges	370	280	-	40	-	-	-	-	-	-	-	-	690
- Interest on delayed payment of TDS	98	-	-	-	-	-	-	-	-	-	-	-	98
- Website designing Charges	65000	-	-	-	-	-	-	-	-	-	-	-	65000
- TDS late filing Fees	47680	-	-	-	-	-	-	-	-	-	-	-	47680
- Rates & Taxes	-	-	-	-	-	-	-	700	7512	-	-	-	8212
Transfers as per Contra. (C)													
- Bangalore Main F.C. A/c	-	-	-	-	-	-	-	-	-	-	-	-	-
- Sneha Care Home	929669	-	-	-	-	-	-	-	-	-	-	-	929669
- Shehadan, Bangalore	1491140	-	-	-	-	-	-	-	-	-	-	-	1491140
- Camillus Home Yellampet	2452000	-	-	-	-	-	-	-	-	-	-	-	2452000
- Sneha Groom	17122822	-	-	-	-	-	-	-	-	-	-	-	17122822
- Snehatheeram, Ernakulam - Kerala	1800000	-	-	-	-	-	-	-	-	-	-	-	1800000
- Snehasadan, Mangalore	860234	-	-	-	-	-	-	-	-	-	-	-	860234
- Hyderabad Branch	1023783	-	-	-	-	-	-	-	-	-	-	-	1023783
- Camillian Task Force Account	2890000	-	-	-	-	-	-	-	-	-	-	-	2890000
CLOSING BALANCES OF CASH/BANK/INVESTMENTS													
Cash on hand	4881	202	11527	-	4546	235	-	5742	3753	1749	6868	20076	112199
Balances with Banks	2454319	5976	430874	-	78573	300707	-	187544	111149	29346	2608	35724	3606620
TOTAL	42718383	6468	2543508	1700	1668221	882722	16178	17265009	1867517	975915	1082362	4348760	73396733

We hereby certify that the Analytical (unit-wise) foregoing Receipts and Payments Account for the year ended 31st March 2015 prepared on the basis of books of account and information furnished represents a true and fair view of the statement of transactions and of the balances held in cash and with banks for the year ended on that date.

Video our Certificate in Form FC-6 of even date

For LAWRENCE TELLIS & ASSOCIATES  
CHARTERED ACCOUNTANTS  
(FIRM REGISTRATION NO. 001857S)



(ROHAN MIRANDA)  
PARTNER  
(ICAI: M.No. 022772)

END OF ANNI-SUB-CONSOLIDATED R & P AC (PAGE 4)

**LAWRENCE TELLIS & ASSOCIATES**  
Chartered Accountants

No. 44/45, 2nd Floor, Vinayaka Complex  
Residency Cross Road, Bangalore - 560 025  
Ph.: 41514791/92/93

(FIRM ICAI REGN. No. 001857S)

For SNEHA CHARITABLE TRUST

*For*  
F. BUDY K GEORGE  
(TREASURER)



PLACE : BANGALORE  
DATED : 31/08/2015



**SNEHA CHARITABLE TRUST**  
**UPASANA, P.B.NO.2913, DHARMARAM COLLEGE POST, BANGALORE - 560 029**

**ANNEXURE - II**

**TRUST LOCAL, SNEHATHEERAM TRUST LOCAL, NANMA SNEHATHEERAM LOCAL AND SNEHATHEERAM LOCAL ACCOUNTS**  
**SUB - CONSOLIDATED RECEIPTS AND PAYMENTS ACCOUNT FOR THE YEAR ENDED 31ST MARCH 2015**

PARTICULARS	Trust Local Account, Aluva	Snehatheeram Trust Local Account	Nanma Snehatheeram Local Account	Snehatheeram Local Account	Total
	Rs.			Rs.	Rs.
<b>OPENING BALANCES OF CASH/BANK</b>					
Cash on hand	244	-	-	10516	10760
Balances with Banks	5810	6445	-	30034	42289
<b>RECEIPTS DURING THE YEAR</b>					
Donations received	50000	603600	71000	-	724600
<b>Bank Interest-</b>					
-Savings Bank A/c	1254	576	450	1154	3434
<b>Inter-unit Transfers as per Contra( C)</b>					
-Camillian Task Force Account	-	-	100000	-	100000
<b>TOTAL</b>	<b>57308</b>	<b>610621</b>	<b>171450</b>	<b>41704</b>	<b>881083</b>
<b>PAYMENTS DURING THE YEAR</b>					
<b>Treatment &amp; Rehabilitation of persons affected by AIDS -</b>					
-CCTV System Installed	-	41550	-	-	41550
-Bedding, Clothing & Footwear	-	2255	2061	-	4316
-Electricity & Water Charges	-	4820	-	-	4820
-Food & Provision	-	130230	500	-	130730
<b>-Repairs &amp; Maintenance</b>					
-Vehicle	-	15121	-	-	15121
-Building	-	25124	-	-	25124
-Computer	-	300	-	-	300
-Electrical Equipments	-	34867	-	-	34867
-Household Maintenance	-	1390	-	-	1390
-Laundry & Toiletries	-	300	-	-	300
-Medical Expenses	-	26603	2278	-	28881
-Newspaper & Periodicals	-	1875	-	-	1875
-Printing & Stationery	-	13450	-	-	13450
-Salaries & Wages	-	139580	85000	-	224580
-Charity & Donation	-	350	14240	-	14590
-Funeral Expenses	-	2350	-	-	2350
-Gifts & Incentives	-	135	-	-	135
-Functions & Celebrations	-	2250	-	-	2250
-Travelling & Conveyance	-	8303	750	-	9053
-Sports & Recreation	-	7872	-	-	7872
-Petrol, Diesel & Lubricants	-	28335	1500	-	29835
-Gas & Fuel	-	3400	-	-	3400
-Bank Charges	1455	112	613	-	2180
-Postage & Telephone	-	5464	605	-	6069
-Disposals	-	4666	-	-	4666
<b>Inter-unit Transfers as per Contra( C)</b>					
- Main Local Account	-	-	-	1479	1479
<b>CLOSING BALANCES OF CASH/BANK :</b>					
Cash on hand	244	25010	6066	10516	41836
Balances with Banks	55609	84909	57837	29709	228064
<b>TOTAL</b>	<b>57308</b>	<b>610621</b>	<b>171450</b>	<b>41704</b>	<b>881083</b>



PLACE : BANGALORE  
DATED : 31/08/2015

For SNEHA CHARITABLE TRUST

*[Signature]*  
**Fr.BIJOY K GEORGE**  
**(TREASURER)**

Vide our audit report of even date

For LAWRENCE TELLIS & ASSOCIATES  
**CHARTERED ACCOUNTANTS**  
**(FIRM REGISTRATION NO. 001857S)**

*[Signature]*  
**(ROHAN MIRANDA)**  
**PARTNER**  
**(ICAI M.No. 022772)**



**LAWRENCE TELLIS & ASSOCIATES**  
**Chartered Accountants**  
**No. 44/45, 2nd Floor, Vinayaka Complex**  
**Residency Cross Road, Bangalore - 560 025**  
**Ph.: 41514791/92/93**  
**(FIRM ICAI REGN. No. 001857S)**

**SNEHA CHARITABLE TRUST**  
**UPASANA, P.B.NO.2913, DHARMARAM COLLEGE POST, BANGALORE - 560 029**  
**ANNEXURE - III**  
**SNEHADAAN BANGALORE, FEDERAL BANK, LS PROJECT AND TB/HIV - LOCAL ACCOUNTS**  
**SUB - CONSOLIDATED RECEIPTS AND PAYMENTS ACCOUNT FOR THE YEAR ENDED 31ST MARCH 2015**

<u>PARTICULARS</u>	<u>Snehadaan Bangalore Local Account</u>	<u>Snehadaan Local Account (Federal Bank)</u>	<u>Snehadaan LS Project</u>	<u>Snehadaan TB/HIV Local</u>	<u>Total</u>
	<u>Rs.</u>	<u>Rs.</u>	<u>Rs.</u>	<u>Rs.</u>	<u>Rs.</u>
<b><u>OPENING BALANCES OF CASH/BANK</u></b>					
Cash on hand	725	-	-	4790	5515
Balances with Banks	-3061	-	40000	6367	43306
<b><u>RECEIPTS DURING THE YEAR</u></b>					
Donations received	4281810	1887851	-	-	6169661
<b><u>Bank Interest:-</u></b>					
-Savings Bank A/c	5685	2667	1484	257	10093
Employees Contribution to Provident Fund	33080	22560	-	-	55640
Income/Receipts from sale of Candles	492955	-	-	-	492955
Farm/Garden Income	10000	-	-	-	10000
Lab Income	110020	-	-	-	110020
<b><u>Inter-unit Transfers as per Contra (C)</u></b>					
- Snehadaan LS Project	4442	-	-	-	4442
<b>TOTAL</b>	<b>4935656</b>	<b>1913078</b>	<b>41484</b>	<b>11414</b>	<b>6901632</b>
<b><u>PAYMENTS DURING THE YEAR</u></b>					
<b><u>Treatment &amp; Rehabilitation of persons affected by AIDS :-</u></b>					
-Physiotherapy Equipments purchased	-	281699	-	-	281699
-Telephone Instruments purchased	1399	-	-	-	1399
-Washing machine purchased	23000	-	-	-	23000
-Tax deducted at source remitted	7738	-	-	-	7738
-Bedding, Clothing & Footwear	35099	-	-	-	35099
-Electricity & Water Charges	285370	-	-	-	285370
-Food & Provision	1794545	64490	-	-	1859035
<b><u>Repairs &amp; Maintenance</u></b>					
-Vehicle	78671	-	-	-	78671
-General	1975	-	-	-	1975
-Computer	8537	-	-	-	8537
-Building	44390	-	-	-	44390
-Electrical Equipments	79488	-	-	-	79488
-Borewell	8000	-	-	-	8000
-Solar Equipments	15000	-	-	-	15000
-Household Maintenance	32509	3500	-	-	36009
-Charity & Donations	23700	-	-	-	23700
-Laundry & Toiletries	65985	-	-	-	65985
-Medical Expenses	314266	244926	-	-	559192
<b>c/fd</b>	<b>2819672</b>	<b>594615</b>	<b>-</b>	<b>-</b>	<b>3414287</b>

ANN-III-SUB - CONSOLIDATED R & P A/C (PAGE 1) CONTD.....



**SNEHA CHARITABLE TRUST**  
**ASANA, P.B.NO.2913, DHARMARAM COLLEGE POST, BANGALORE - 560 029**  
**ANNEXURE - III**  
**SNEHADAAN BANGALORE, FEDERAL BANK, LS PROJECT AND TB/HIV - LOCAL ACCOUNTS**  
**SUB - CONSOLIDATED RECEIPTS AND PAYMENTS ACCOUNT 2015 (CONTD.....)**

PARTICULARS	Snehadaan Bangalore Local Account	Snehadaan Local Account (Federal Bank)	Snehadaan LS Project	Snehadaan TB/HIV Local	Total
	Rs.	Rs.	Rs.	Rs.	Rs.
b/fd	2819672	594615	-	-	3414287
-Newspaper & Periodicals	7524	-	-	-	7524
-Printing & Stationery	74214	-	-	-	74214
-Salaries & Wages	1016018	329921	-	-	1345939
-Functions & Celebrations	7480	-	-	-	7480
-Legal & Professional Charges	14000	-	-	-	14000
-Provident Fund remitted	121001	194796	-	-	315797
-Candle making Expenses	145191	-	-	-	145191
-Travelling & Conveyance	57346	-	-	-	57346
-Sports & Recreation	25410	-	-	-	25410
-Petrol, Diesel & Lubricants	177347	-	-	-	177347
-Honorarium paid	85500	44000	-	-	129500
-Farm / Garden maintenance	8100	-	-	-	8100
-Photos, Cassettes & Films	460	-	-	-	460
-Priest maintenance	4170	-	-	-	4170
-Staff Welfare Expenses	17000	-	-	-	17000
-Gas & Fuel	224211	-	-	-	224211
-Bank Charges	1948	377	-	-	2325
-Postage & Telephone	86256	-	-	-	86256
-Return of grant to KASAPS	-	-	37042	-	37042
<b>Inter-unit Transfers as per Contra (C)</b>					
- Main Local Account			4442		4442
<b>CLOSING BALANCES OF CASH/BANK :</b>					
Cash on hand	17486	-	-	4790	22276
Balances with Banks	25342	749369	-	6624	781335
<b>TOTAL</b>	<b>4935656</b>	<b>1913078</b>	<b>41484</b>	<b>11414</b>	<b>6901632</b>

Vide our audit report of even date

For SNEHA CHARITABLE TRUST

*Fr. Bijooy K George*

Fr. BISOY K GEORGE  
(TREASURER)

For LAWRENCE TELLIS & ASSOCIATES  
 CHARTERED ACCOUNTANTS  
 (FIRM REGISTRATION NO. 001857S)

(ROHAN MIRANDA)  
 PARTNER  
 (ICAI M.No. 022772)



PLACE : BANGALORE  
 DATED : 31/08/2015



END OF ANN-III-SUB - CONSOLIDATED R & P A/C (PAGE 2)

**LAWRENCE TELLIS & ASSOCIATES**  
 Chartered Accountants  
 No. 44/45, 2nd Floor, Vinayaka Complex  
 Residency Cross Road, Bangalore - 560 025  
 Ph.: 41514791/92/93  
 (FIRM ICAI REGN. No. 001857S)



**SNEHA CHARITABLE TRUST**  
**UPASANA, P.B.NO.2913, DHARMARAM COLLEGE POST, BANGALORE - 560 029**

**ANNEXURE - IV**

**SNEHASADAN LOCAL, TB/HIV AND GFATM ACCOUNTS - MANGALORE**

**SUB - CONSOLIDATED RECEIPTS AND PAYMENTS ACCOUNT FOR THE YEAR ENDED 31ST MARCH 2015**

PARTICULARS	SnehaSadana Mangalore Local Account Rs.	SnehaSadana TB/HIV Rs.	GFATM Local Account Rs.	Total Rs.
<b>OPENING BALANCES OF CASH/BANK</b>				
Cash on hand	2334	4835	44	7213
Balances with Banks	434617	31168	2150	467935
<b>RECEIPTS DURING THE YEAR</b>				
Donations received	2348712	-	-	2348712
Bank Interest:				
-Savings Bank A/c	17674	354	87	18115
Sale proceeds from sale of Vehicle	166500	-	-	166500
<b>TOTAL</b>	<b>2969837</b>	<b>36357</b>	<b>2281</b>	<b>3008475</b>

**PAYMENTS DURING THE YEAR**

**Treatment & Rehabilitation of  
persons affected by AIDS -**

-Electrical Equipments purchased	5150	-	-	5150
-Computer & Accessories purchased	13575	-	-	13575
-Furniture & Fixtures purchased	15480	-	-	15480
-Vehicle purchased	405126	-	-	405126
-Water purifier system purchased	8500	-	-	8500
-Telephone Instrument	16700	-	-	16700
-Bedding, Clothing & Footwear	24833	-	-	24833
-Electricity & Water Charges	91498	-	-	91498
-Food & Provision	602153	8655	-	610808
<b>-Repairs &amp; Maintenance</b>				
-Vehicle	57226	-	-	57226
-General	25628	-	-	25628
-Building	38831	-	-	38831
-Computer	11449	-	-	11449
-Electrical Equipments	12552	-	-	12552
-Household Maintenance	44373	-	-	44373
-Laundry & Toiletries	21192	-	-	21192
-Medical Expenses	151098	-	-	151098
-Newspaper & Periodicals	6516	-	-	6516
<b>c/d</b>	<b>1551880</b>	<b>8655</b>	<b>-</b>	<b>1560535</b>

ANN-IV-SUB - CONSOLIDATED R & P A/C (PAGE 1) CONTD.....



**SNEHA CHARITABLE TRUST**

UPASANA, P.B. NO.2913, DHARMARAM COLLEGE POST, BANGALORE - 560 029

**ANNEXURE - IV****SNEHASADAN LOCAL, TB/HIV AND GFATM ACCOUNTS - MANGALORE****SUB - CONSOLIDATED RECEIPTS AND PAYMENTS ACCOUNT FOR THE YEAR ENDED 31ST MARCH 2015 (CONTD....)**

PARTICULARS	SnehaSadana Mangalore Local Account Rs.	SnehaSadana TB/HIV Rs.	GFATM Local Account Rs.	Total Rs.
b/fd	1551880	8655	-	1560535
-Printing & Stationery	33518	-	-	33518
-Salaries & Wages	572000	18000	-	590000
-Garden Expenses	10672	-	-	10672
-Travelling & Conveyance	38608	7680	-	46288
-Sports & Recreation	28025	-	-	28025
-Petrol, Diesel & Lubricants	102074	-	-	102074
-Gas & Fuel	94306	-	-	94306
-Bank Charges	674	-	-	674
-Bio-medical waste management	17562	-	-	17562
-Charity & Donation	10000	-	-	10000
-Doctors' Consultation Charges	23500	-	-	23500
-Gifts & Incentives	14604	-	-	14604
-Ground levelling Charges	101600	-	-	101600
-Postage & Telephone	39190	-	-	39190
-Rates, Taxes & Insurance	1245	-	-	1245
-Educational Expenses	26567	-	-	26567
CLOSING BALANCES OF CASH/BANK :				
Cash on hand	7082	668	44	7794
Balances with Banks	296730	1354	2237	300321
<b>TOTAL</b>	<b>2969837</b>	<b>36357</b>	<b>2281</b>	<b>3008475</b>

Vide our audit report of even date

For SNEHA CHARITABLE TRUST

For LAWRENCE TELLIS & ASSOCIATES  
CHARTERED ACCOUNTANTS  
(FIRM REGISTRATION NO. 001857S)PLACE : BANGALORE  
DATED : 31/08/2015Fr. BIJOY K GEORGE  
(TREASURER)(ROHAN MIRANDA)  
PARTNER  
(ICAI M.No. 022772)

END OF ANN-IV-SUB - CONSOLIDATED R &amp; P A/C (PAGE 2)

**LAWRENCE TELLIS & ASSOCIATES**  
 Chartered Accountants  
 No. 44/45, 2nd Floor, Vinayaka Complex  
 Residency Cross Road, Bangalore - 560 025  
 Ph.: 41514791/92/93  
 (FIRM ICAI REGN. No. 001857S)



**SNEHA CHARITABLE TRUST**  
**UPASANA, P.B.NO.2913, DHARMARAM COLLEGE POST, BANGALORE - 560 029**  
**SCHEDULES ANNEXED TO AND FORMING PART OF THE CONSOLIDATED ACCOUNTS**  
**FOR THE YEAR ENDED 31ST MARCH 2015**

**SCHEDULE 'A'**

**SCHEDULE OF FIXED ASSETS AND DEPRECIATION**

SL. NO.	DESCRIPTION OF ASSET	COST/W.D.V as at 01-04-2014	Additions during the year	Deletions during the year	Balance as at 31-03-2015	Rate of Depreciation	Depreciation for the year (pro-rata)	COST/W.D.V as at 31-03-2015
		Rs.	Rs.	Rs.	Rs.		Rs.	Rs.
1	Land & Land development, Yellampet	-	110000	-	110000	-	-	110000
2	Buildings-							
	- Sneha Home for HIV Children at Carmelaram	8185006	-	-	8185006	5%	409250	7775756
	- Construction of Boys home, Krishnagiri - WIP	8717473	1251212	-	9968685	-	-	9968685
	- Construction of Church, Krishnagiri - WIP	2967001	2842409	-	5809410	-	-	5809410
	- Construction of Girls Hostel, Krishnagiri - WIP	1224646	1387039	-	2611685	-	-	2611685
	- Construction of Meeting Hall, Krishnagiri - WIP	1097967	398327	-	1496294	-	-	1496294
	- Construction of School Building, Krishnagiri - WIP	7470172	6202918	-	13673090	-	-	13673090
	- Camillus Home, Yellampet -WIP	3591767	201580	-	3793347	-	-	3793347
	- AIDS Centre Building, Always	5931280	-	-	5931280	5%	296564	5634716
	- Renovation of Aids Centre Building, Always - WIP	-	685628	-	685628	-	-	685628
	- Snehadaan Building	242500	-	-	242500	5%	12125	230375
3	Water Tank	1237637	-	-	1237637	5%	61882	1175755
4	Sprinkler Irrigation Equipment	60653	-	-	60653	10%	6065	54588
5	Sports Equipments	67038	-	-	67038	10%	6704	60334
6	Refrigerator	16229	-	-	16229	10%	1623	14606
7	Television set	4785	33378	-	38163	10%	1531	36632
8	Livestock	28000	20000	-	48000	-	-	48000
9	Furniture & Fixtures	1178671	747152	-	1925823	10%	159804	1765019
10	Telephone Instruments	48188	20899	-	69085	10%	6520	62565
11	Electrical Equipments & Fittings	432265	126949	-	559214	10%	50387	508827
12	Library Books/Facilities	49	-	-	49	60%	29	20
13	Washing Machine	61382	40600	-	101982	15%	12255	89707
14	Air Conditioner	-	44000	-	44000	10%	4496	39504
15	Basket Ball Court	537285	-	-	537285	5%	26864	510421
16	Generator	247030	-	-	247030	15%	37055	209975
17	Projector	43931	-	-	43931	15%	6590	37341
18	Printer	-	21965	-	21965	15%	2256	19709
19	Computer & Accessories	111473	233705	-	345178	60%	104169	241009
20	UPS System	74873	-	-	74873	60%	44864	29989
21	Pumpset	82470	54376	-	136846	15%	13672	123174
22	Borewell & Pumpset	675557	161775	-	837332	5%	35579	801753
23	EPABX System	28629	-	-	28629	10%	2863	25766
24	Vehicles	603191	405126	95073	913244	15%	120849	792395
25	Laboratory Equipments	5125	-	-	5125	40%	2050	3075
26	Physiotherapy Equipments	-	281699	-	281699	40%	1235	280464
27	Drilling Machine	733	-	-	733	15%	110	623
28	Hospital Equipments	2171	-	-	2171	40%	868	1303
29	Camera	7341	3490	-	10831	10%	1068	9763
30	CCTV Camera	-	144451	-	144451	10%	8849	135802
31	Sound System	-	59499	-	59499	10%	2212	57287
32	Laptop	132	-	-	132	60%	79	53
33	Solar Lighting System	1	-	-	1	100%	1	-
34	Video Camera	12666	-	-	12666	10%	1267	11399
35	Bio gas plant	307466	-	-	307466	60%	184480	122986
36	Tempo Trax Vehicle	70442	-	-	70442	30%	21133	49309
37	Laboratory Furniture	25969	-	-	25969	10%	2597	23372
38	Household Equipments	36664	-	-	36664	10%	3666	32998
39	Gas Installation	2806	-	-	2806	60%	1684	1122
40	Water Purifier System	8598	17000	-	25598	10%	1970	23568
41	Solar Batteries	2280	-	-	2280	80%	1824	456
42	Welding Machine	5267	-	-	5267	15%	790	4477
43	Musical Instruments	18166	-	-	18166	10%	1817	16349
44	Domestic Equipments	24909	20000	-	44909	10%	3987	40922
45	Sewing Machine	8999	8650	-	15649	10%	936	14713
46	Medical Equipment	77293	74001	-	151294	40%	54760	96534
47	Solar Equipment	350736	541835	-	892571	15%	67529	825042
48	Xerox Machine	-	55915	-	55915	15%	6940	48975
49	Drip Irrigation Facility	-	65814	-	65814	10%	2164	63650
	<b>TOTAL</b>	<b>45934990</b>	<b>16259392</b>	<b>95073</b>	<b>62099309</b>		<b>1798132</b>	<b>60301177</b>

**NOTES :-**

- Buildings (Item 2) are constructed on lands owned by the Society of Order of St.Camillus licenced to the Trust under ecclesiastical license arrangement(s) with the former Society/ institution.
- Water Tank structure (item 3) is constructed on lands owned by the Society of Order of St.Camillus licenced to the Trust under ecclesiastical license arrangement with the former Society / institution.



Schedules .....Page 1



**SNEHA CHARITABLE TRUST**  
**UPASANA, P.B. NO.2913, DHARMARAM COLLEGE POST, BANGALORE - 560 029**  
**SCHEDULES ANNEXED TO AND FORMING PART OF THE CONSOLIDATED ACCOUNTS**  
**FOR THE YEAR ENDED 31ST MARCH 2015**

**SCHEDULE 'B'**

**NOTES TO THE ACCOUNTS AND STATEMENT OF SIGNIFICANT ACCOUNTING**  
**POLICIES ADOPTED IN THE ACCOUNTS**

**1) SIGNIFICANT ACCOUNTING POLICIES**

**A) OVERALL -**

Accounts have been prepared on historical cost and on cash basis of accounting. It is the policy of the Trust/institution to prepare its financial statements on the cash receipts and disbursements basis. On this basis, revenue comprising of voluntary contributions, donations, bank interest and other receipts and the related assets are recognised when received rather than when earned and expenses are recognised when paid rather than when the obligation is incurred.

**B) CONCERNING BALANCE SHEET -**

a. Assets and liabilities are recorded at cost to the Trust/institution.

b. **Basis of Valuation of Fixed Assets -**

All Fixed assets are valued at cost less depreciation. Freehold land at Yellampet acquired during the year is not depreciated.

**C) CONCERNING INCOME AND EXPENDITURE ACCOUNT -**

a. Income and expenses are accounted on cash basis.

b. **DEPRECIATION -**

The Fixed assets have been depreciated on written down value method at the rates which would enable the cost of the asset to be written off over the useful working life of the asset. Additions to Fixed assets during the year have been depreciated on pro-rata basis.

For SNEHA CHARITABLE TRUST



Fr. BIJOY K GEORGE  
(TREASURER)

PLACE : BANGALORE  
DATED : 31/08/2015



For LAWRENCE TELLIS & ASSOCIATES  
CHARTERED ACCOUNTANTS  
(FIRM REGISTRATION NO. 001857S)

  
(ROHAN MIRANDA)  
PARTNER  
(ICAI M.No. 022772)



End of Schedules .....Page 2

**LAWRENCE TELLIS & ASSOCIATES**  
Chartered Accountants  
No. 44/45, 2nd Floor, Vinayaka Complex  
Residency Cross Road, Bangalore - 560 025  
Ph.: 41514791/92/93  
(FIRM ICAI REGN. No. 001857S)

# Donate Now

## ▶ Indian Donors

Indian Donors Can Transfer The Money By Drawing A Cheque On Behalf Of Sneha Charitable Trust.

You Can Also Transfer The Money To Our Bank Account:-

**Account Name: Sneha Charitable Trust, Bank: South Indian Bank, Branch: Brigade Road Branch, Bangalore-25, Account Number: 0108053000008725, Swift Code Of South Indian Bank: Soinin55, Ifsc Code: Sibl0000108**

If You Are An Indian Tax-Payer You Can Avail 50% Tax Exemption For Your Donation, Using Our 80 G Certificate.

## ▶ International Donors

International Donors Can Transfer The Money To Our Fcra Account, Using Any Money Transferring Method.

**Account Name: Sneha Charitable Trust, Bank: South Indian Bank, Branch: Brigade Road Branch, Bangalore-25, Account Number: 0108053000008729, Swift Code Of South Indian Bank: Soinin55, Ifsc Code: Sibl0000108**

## ▶ 12 A - Income Tax

Registration No.	DIT[E]/12A/VOL.III/S-1216/02-03
Registration Date.	March 31, 2003
Registration Details along with Circle	Income Tax Officer [Exemptions] Bangalore
PAN No.	AADTS1904L

## ▶ 80 G - Income Tax

Registration No	DIT[E]/80G[R]/185/AADTS1904L/ITO[E]-3/2010-
Registration Details along with Circle	Director Of Income Tax [E], Bangalore



## Reach us

### The President

Sneha Charitable Trust Office, **Snehadaan Campus**  
Ambedkar Nagar, Sarjapura Road, Carmelaram Post,  
Bengaluru- 560035, Karnataka, INDIA

Mobile: +91 9448084061

Email: [snehacharitabletrut2003@gmail.com](mailto:snehacharitabletrut2003@gmail.com)

Website: [www.snehacharitabletrust.org](http://www.snehacharitabletrust.org)